

For Research Use Only

ICAM-2/CD102 Recombinant antibody, PBS Only (Capture)

Catalog Number: 84857-3-PBS



Basic Information

Catalog Number: 84857-3-PBS	GenBank Accession Number: NM_001099789.2	Purification Method: Protein A purification
Size: 100ug, Concentration: 1 mg/ml by Nanodrop;	GeneID (NCBI): 3384	CloneNo.: 242237G11
Source: Rabbit	UNIPROT ID: P13598	
Isotype: IgG	Full Name: intercellular adhesion molecule 2	
	Calculated MW: 31kDa	
	Observed MW: 60 kDa	

Applications

Tested Applications:
WB, IF/ICC, Cytometric bead array, Indirect ELISA

Species Specificity:
human

Product Information

84857-3-PBS targets ICAM-2/CD102 as part of a matched antibody pair:

MP01646-2: 84857-3-PBS capture and 84857-4-PBS detection (validated in Cytometric bead array)

Unconjugated rabbit recombinant monoclonal antibody in PBS only (BSA and azide free) storage buffer at a concentration of 1 mg/mL, ready for conjugation. Created using Proteintech's proprietary in-house recombinant technology. Recombinant production enables unrivalled batch-to-batch consistency, easy scale-up, and future security of supply.

This conjugation ready format makes antibodies ideal for use in many applications including: ELISAs, multiplex assays requiring matched pairs, mass cytometry, and multiplex imaging applications. Antibody use should be optimized by the end user for each application and assay.

Background Information

ICAM2 is a cell adhesion protein having important roles in cell migration, especially during inflammation when leukocytes cross the endothelium. Initially described as a receptor for lymphocyte function-associated antigen-1 (LFA1), ICAM2 may play a role in lymphocyte recirculation by blocking LFA-1-dependent cell adhesion. It mediates adhesive interactions important for antigen-specific immune response, NK-cell mediated clearance, lymphocyte recirculation, and other cellular interactions important for immune response and surveillance. ICAM2 has six N-linked glycosylation sites at amino acids (asparagines) 47, 82, 105, 153, 178 and 187.

Storage

Storage:
Store at -80°C.
Storage Buffer:
PBS Only

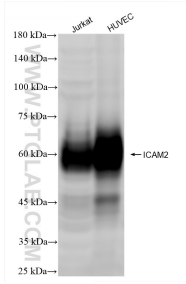
For technical support and original validation data for this product please contact:

T: 1 (888) 4PTGLAB (1-888-478-4522) (toll free
in USA), or 1(312) 455-8498 (outside USA)

E: proteintech@ptglab.com
W: ptglab.com

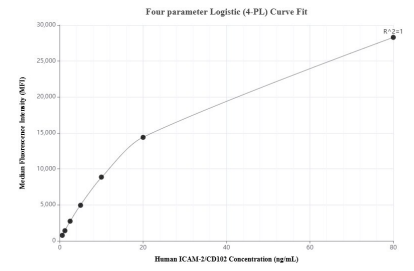
This product is exclusively available under Proteintech Group brand and is not available to purchase from any other manufacturer.

Selected Validation Data



Various lysates were subjected to SDS PAGE followed by western blot with 84857-3-RR (ICAM-2/CD102 antibody) at dilution of 1:10000 incubated at room temperature for 1.5 hours. This data was developed using the same antibody clone with 84857-3-PBS in a different storage buffer formulation.

Immunofluorescent analysis of (4% PFA) fixed HUVEC cells using ICAM-2/CD102 antibody (84857-3-RR, Clone: 242237G11) at dilution of 1:500 and CoralLite®488-Conjugated Goat Anti-Rabbit IgG(H+L) (SA00013-2). This data was developed using the same antibody clone with 84857-3-PBS in a different storage buffer formulation.



Cytometric bead array standard curve of MP01646-2, ICAM2/CD102 Recombinant Matched Antibody Pair, PBS Only. Capture antibody: 84857-3-PBS. Detection antibody: 84857-4-PBS. Standard: Eg2002. Range: 0.625-80 ng/mL