

For Research Use Only

# ICAM-2/CD102 Recombinant antibody, PBS Only (Capture)

Catalog Number: 84857-2-PBS



## Basic Information

|   |  |   |
|---|--|---|
| <b>Catalog Number:</b><br>84857-2-PBS                         | <b>GenBank Accession Number:</b><br>NM_001099789.2     | <b>Purification Method:</b><br>Protein A purification |
| <b>Size:</b><br>100ug, Concentration: 1 mg/ml by<br>Nanodrop; | <b>GeneID (NCBI):</b><br>3384                          | <b>CloneNo.:</b><br>242237F8                          |
| <b>Source:</b><br>Rabbit                                      | <b>UNIPROT ID:</b><br>P13598                           |   |
| <b>Isotype:</b><br>IgG  | <b>Full Name:</b><br>intercellular adhesion molecule 2 |   |
|   | <b>Calculated MW:</b><br>31kDa                         |   |

## Applications

**Tested Applications:**  
IF/ICC, Cytometric bead array, Sandwich ELISA,  
Indirect ELISA, Sample test

**Species Specificity:**  
human

## Product Information

84857-2-PBS targets ICAM-2/CD102 as part of a matched antibody pair:

MP01646-1: 84857-2-PBS capture and 84857-1-PBS detection (validated in Cytometric bead array, Sandwich ELISA)

Unconjugated rabbit recombinant monoclonal antibody in PBS only (BSA and azide free) storage buffer at a concentration of 1 mg/mL, ready for conjugation. Created using Proteintech's proprietary in-house recombinant technology. Recombinant production enables unrivalled batch-to-batch consistency, easy scale-up, and future security of supply.

This conjugation ready format makes antibodies ideal for use in many applications including: ELISAs, multiplex assays requiring matched pairs, mass cytometry, and multiplex imaging applications. Antibody use should be optimized by the end user for each application and assay.

## Background Information

ICAM2 is a cell adhesion protein having important roles in cell migration, especially during inflammation when leukocytes cross the endothelium. Initially described as a receptor for lymphocyte function-associated antigen-1 (LFA1), ICAM2 may play a role in lymphocyte recirculation by blocking LFA-1-dependent cell adhesion. It mediates adhesive interactions important for antigen-specific immune response, NK-cell mediated clearance, lymphocyte recirculation, and other cellular interactions important for immune response and surveillance. ICAM2 has six N-linked glycosylation sites at amino acids (asparagines) 47, 82, 105, 153, 178 and 187.

## Storage

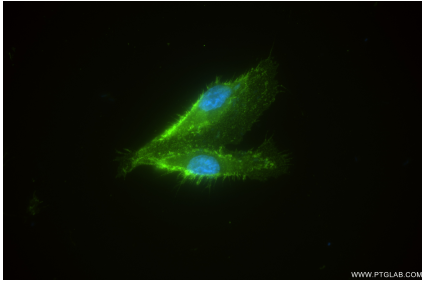
**Storage:**  
Store at -80°C.

**Storage Buffer:**  
PBS Only

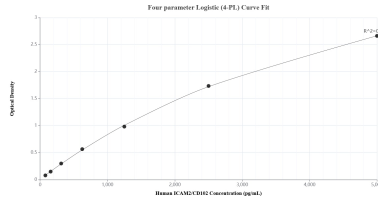
For technical support and original validation data for this product please contact:  
T: 1 (888) 4PTGLAB (1-888-478-4522) (toll free in USA), or 1(312) 455-8498 (outside USA)  
E: proteintech@ptglab.com  
W: ptglab.com

**This product is exclusively available under Proteintech Group brand and is not available to purchase from any other manufacturer.**

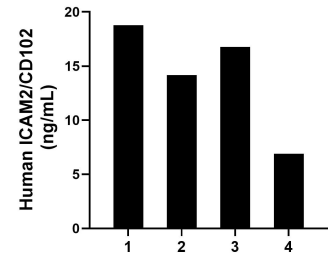
## Selected Validation Data



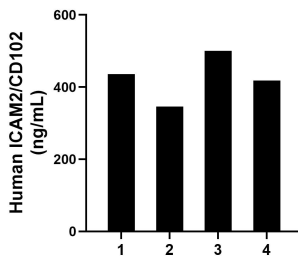
Immunofluorescent analysis of (4% PFA) fixed HUVEC cells using ICAM-2/CD102 antibody (84857-2-RR, Clone: 242237F8) at dilution of 1:400 and CoraLite@488-Conjugated Goat Anti-Rabbit IgG(H+L) (SA00013-2). This data was developed using the same antibody clone with 84857-2-PBS in a different storage buffer formulation.



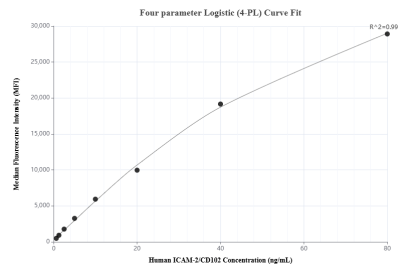
Sandwich ELISA standard curve of MP01646-1, Human ICAM2/CD102 Recombinant Matched Antibody Pair - PBS only. 84857-2-PBS was coated to a plate as the capture antibody and incubated with serial dilutions of standard Eg2002. 84857-1-PBS was HRP conjugated as the detection antibody. Range: 78.1-5000 pg/mL.



Urine of four individual healthy human donors was measured. The ICAM2/CD102 concentration of detected samples was determined to be 14.2 ng/mL with a range of 6.9-18.8 ng/mL.



Serum of four individual healthy human donors was measured. The ICAM2/CD102 concentration of samples was determined to be 425.2 ng/mL with a range of 346.3-500.1 ng/mL.



Cytometric bead array standard curve of MP01646-1, ICAM2/CD102 Recombinant Matched Antibody Pair, PBS Only. Capture antibody: 84857-2-PBS. Detection antibody: 84857-1-PBS. Standard: Eg2002. Range: 0.625-80 ng/mL.