

For Research Use Only

SLC3A1 Recombinant antibody, PBS Only (Capture)

Catalog Number:84856-2-PBS



Basic Information

Catalog Number:

84856-2-PBS

Size:

100ug, Concentration: 1 mg/ml by Nanodrop;

Source:

Rabbit

Isotype:

IgG

Immunogen Catalog Number:

AG9525

GenBank Accession Number:

BC022386

GeneID (NCBI):

6519

UNIPROT ID:

Q07837

Full Name:

solute carrier family 3 (cystine, dibasic and neutral amino acid transporters, activator of cystine, dibasic and neutral amino acid transport), member 1

Calculated MW:

685 aa, 79 kDa

Observed MW:

78-90 kDa

Purification Method:

Protein A purification

CloneNo.:

242370D3

Applications

Tested Applications:

WB, Cytometric bead array, Indirect ELISA

Species Specificity:

human, mouse, rat

Product Information

84856-2-PBS targets SLC3A1 as part of a matched antibody pair:

MP01622-2: 84856-2-PBS capture and 84856-3-PBS detection (validated in Cytometric bead array)

Unconjugated rabbit recombinant monoclonal antibody in PBS only (BSA and azide free) storage buffer at a concentration of 1 mg/mL, ready for conjugation. Created using Proteintech's proprietary in-house recombinant technology. Recombinant production enables unrivalled batch-to-batch consistency, easy scale-up, and future security of supply.

This conjugation ready format makes antibodies ideal for use in many applications including: ELISAs, multiplex assays requiring matched pairs, mass cytometry, and multiplex imaging applications. Antibody use should be optimized by the end user for each application and assay.

Background Information

SLC3A1 (Neutral and basic amino acid transport protein rBAT) is also named as NBAT, D2h, RBAT. It is involved in the high-affinity, sodium-independent transport of cystine and neutral and dibasic amino acids (system B_{0,+}-like activity). SLC3A1 can be degraded, at least in part, via the endoplasmic reticulum-associated degradation (ERAD) pathway (PMID:18332091). SLC3A1 has different isoforms vary from 79 kDa to 36kDa and the 85 kDa glycosylated protein can be detected in SDS-PAGE. (PMID:11546643)

Storage

Storage:

Store at -80°C.

Storage Buffer:

PBS Only

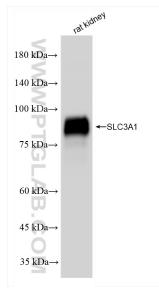
For technical support and original validation data for this product please contact:

T: 1 (888) 4PTGLAB (1-888-478-4522) (toll free in USA), or 1(312) 455-8498 (outside USA)

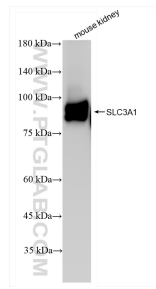
E: proteintech@ptglab.com
W: ptglab.com

This product is exclusively available under Proteintech Group brand and is not available to purchase from any other manufacturer.

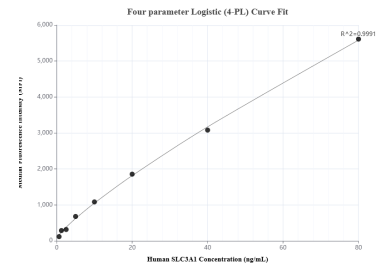
Selected Validation Data



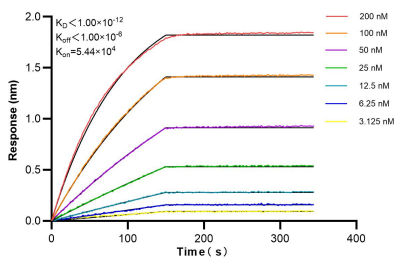
rat kidney tissue were subjected to SDS PAGE followed by western blot with 84856-2-RR (SLC3A1 antibody) at dilution of 1:10000 incubated at room temperature for 1.5 hours. This data was developed using the same antibody clone with 84856-2-PBS in a different storage buffer formulation.



mouse kidney tissue were subjected to SDS PAGE followed by western blot with 84856-2-RR (SLC3A1 antibody) at dilution of 1:10000 incubated at room temperature for 1.5 hours. This data was developed using the same antibody clone with 84856-2-PBS in a different storage buffer formulation.



Cytometric bead array standard curve of MP01622-2, SLC3A1 Recombinant Matched Antibody Pair, PBS Only. Capture antibody: 84856-2-PBS. Detection antibody: 84856-3-PBS. Standard: Ag9525. Range: 0.625-80 ng/mL.



Biolayer interferometry (BLI) kinetic assays of 84856-2-RR against Human SLC3A1 were performed. The affinity constant is below 1 pM.