

For Research Use Only

# Serotonin transporter Recombinant antibody, PBS Only

Catalog Number: 84844-3-PBS



## Basic Information

<b>Catalog Number:</b> 84844-3-PBS	<b>GenBank Accession Number:</b> NM_001045	<b>Purification Method:</b> Protein A purification
<b>Size:</b> 100ug, Concentration: 1 mg/ml by Nanodrop;	<b>GeneID (NCBI):</b> 6532	<b>CloneNo.:</b> 242252B9
<b>Source:</b> Rabbit	<b>UNIPROT ID:</b> P31645	
<b>Isotype:</b> IgG	<b>Full Name:</b> solute carrier family 6 (neurotransmitter transporter, serotonin), member 4	
	<b>Calculated MW:</b> 70 kDa	
	<b>Observed MW:</b> 70 kDa	

## Applications

**Tested Applications:**  
WB, Indirect ELISA

**Species Specificity:**  
human, mouse

## Background Information

Serotonin transporter (SERT; SLC6A4) belongs to the sodium- and chloride-dependent monoamine transporter family. SERT is a membrane transporter that terminates the neurotransmission of serotonin, a monoaminergic neurotransmitter, through its reuptake. The SERT uptake mechanism acquires energy for active transport via ATP hydrolysis or movement against electrochemical gradients. As an oligomeric N-glycan, SERT contains disulfide bonds between cysteine residues on the second extracellular domain. Post-translational modifications regulate the uptake kinetics and membrane trafficking of SERT, partly by regulating the proper folding and assembly of SERT in a host-dependent manner (PMID: 30394319).

## Storage

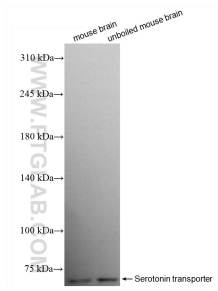
**Storage:**  
Store at -80°C.

**Storage Buffer:**  
PBS Only

For technical support and original validation data for this product please contact:  
T: 1 (888) 4PTGLAB (1-888-478-4522) (toll free in USA), or 1(312) 455-8498 (outside USA)      E: proteintech@ptglab.com  
W: ptglab.com

This product is exclusively available under Proteintech Group brand and is not available to purchase from any other manufacturer.

## Selected Validation Data



Various lysates were subjected to SDS PAGE followed by western blot with 84844-3-RR (Serotonin transporter antibody) at dilution of 1:3000 incubated at room temperature for 1.5 hours. This data was developed using the same antibody clone with 84844-3-PBS in a different storage buffer formulation.