

For Research Use Only

SLC6A4 Recombinant antibody, PBS Only (Capture)

Catalog Number: 84844-2-PBS



Basic Information

Catalog Number: 84844-2-PBS	GenBank Accession Number: NM_001045	Purification Method: Protein A purification
Size: 100ug, Concentration: 1 mg/ml by Nanodrop;	GeneID (NCBI): 6532	CloneNo.: 242252G5
Source: Rabbit	UNIPROT ID: P31645	
Isotype: IgG	Full Name: solute carrier family 6 (neurotransmitter transporter, serotonin), member 4	
	Calculated MW: 70 kDa	

Applications

Tested Applications:
Sandwich ELISA, Indirect ELISA, Sample test

Species Specificity:
human

Product Information

84844-2-PBS targets SLC6A4 as part of a matched antibody pair:

MP01613-1: 84844-2-PBS capture and 84844-1-PBS detection (validated in Sandwich ELISA)

Unconjugated rabbit recombinant monoclonal antibody in PBS only (BSA and azide free) storage buffer at a concentration of 1 mg/mL, ready for conjugation. Created using Proteintech's proprietary in-house recombinant technology. Recombinant production enables unrivalled batch-to-batch consistency, easy scale-up, and future security of supply.

This conjugation ready format makes antibodies ideal for use in many applications including: ELISAs, multiplex assays requiring matched pairs, mass cytometry, and multiplex imaging applications. Antibody use should be optimized by the end user for each application and assay.

Storage

Storage:
Store at -80°C.

Storage Buffer:
PBS Only

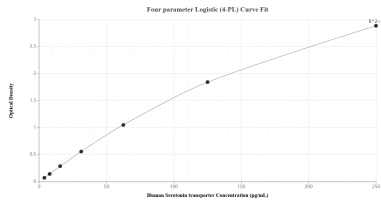
For technical support and original validation data for this product please contact:

T: 1 (888) 4PTGLAB (1-888-478-4522) (toll free in USA), or 1(312) 455-8498 (outside USA)

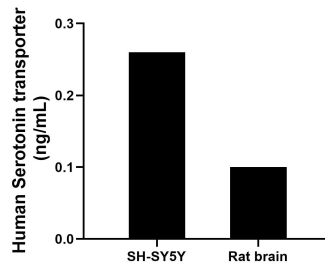
E: proteintech@ptglab.com
W: ptglab.com

This product is exclusively available under Proteintech Group brand and is not available to purchase from any other manufacturer.

Selected Validation Data



Sandwich ELISA standard curve of MP01613-1, Human Serotonin transporter Recombinant Matched Antibody Pair - PBS only. 84844-2-PBS was coated to a plate as the capture antibody and incubated with serial dilutions of standard SY00407. 84844-1-PBS was HRP conjugated as the detection antibody. Range: 3.91-250 pg/mL



The mean Serotonin transporter concentration was determined to be 0.3 ng/mL in SH-SY5Y cell extract based on a 1.0 mg/mL extract load and 0.1 ng/mL in rat brain cell extract based on a 1.6 mg/mL extract load.