

For Research Use Only

APP Recombinant antibody, PBS Only (Capture/Detector)

Catalog Number: 84829-1-PBS



Basic Information

| | | |
|---|--|---|
| Catalog Number: 84829-1-PBS | GenBank Accession Number: BC065529 | Purification Method: Protein A purification |
| Size: 100ug, Concentration: 1 mg/ml by Nanodrop; | GeneID (NCBI): 351 | CloneNo.: 242316B9 |
| Source: Rabbit | UNIPROT ID: P05067 | |
| Isotype: IgG | Full Name: amyloid beta (A4) precursor protein | |
| Immunogen Catalog Number: AG22408 | | |

Applications

Tested Applications:
Cytometric bead array, Sandwich ELISA, Indirect ELISA,
Sample test

Species Specificity:
human

Product Information

84829-1-PBS targets APP as part of a matched antibody pair:

MP01584-1: 84829-3-PBS capture and 84829-1-PBS detection (validated in Cytometric bead array)

MP01584-3: 84829-1-PBS capture and 84829-3-PBS detection (validated in Sandwich ELISA)

Unconjugated rabbit recombinant monoclonal antibody in PBS only (BSA and azide free) storage buffer at a concentration of 1 mg/mL, ready for conjugation. Created using Proteintech's proprietary in-house recombinant technology. Recombinant production enables unrivalled batch-to-batch consistency, easy scale-up, and future security of supply.

This conjugation ready format makes antibodies ideal for use in many applications including: ELISAs, multiplex assays requiring matched pairs, mass cytometry, and multiplex imaging applications. Antibody use should be optimized by the end user for each application and assay.

Storage

Storage:
Store at -80°C.
Storage Buffer:
PBS Only

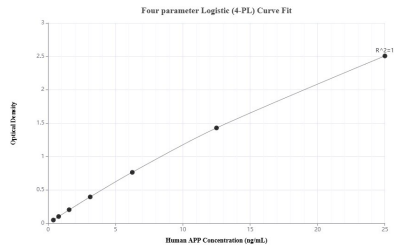
For technical support and original validation data for this product please contact:

T: 1 (888) 4PTGLAB (1-888-478-4522) (toll free
in USA), or 1(312) 455-8498 (outside USA)

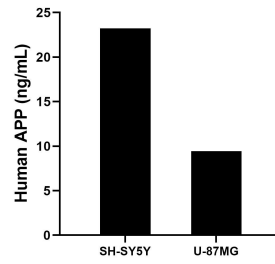
E: proteintech@ptglab.com
W: ptglab.com

This product is exclusively available under Proteintech Group brand and is not available to purchase from any other manufacturer.

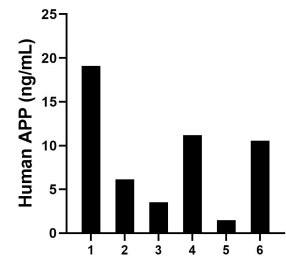
Selected Validation Data



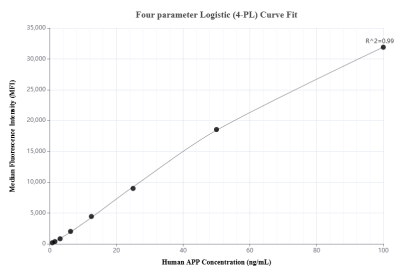
Sandwich ELISA standard curve of MP01584-3, Human APP Recombinant Matched Antibody Pair - PBS only. 84829-1-PBS was coated to a plate as the capture antibody and incubated with serial dilutions of standard Ag22408. 84829-3-PBS was HRP conjugated as the detection antibody. Range: 0.391-25 ng/mL



The mean APP concentration was determined to be 23.24 ng/mL in SH-SY5Y cell extract based on a 1.0 mg/mL extract load and 9.46 ng/mL in U-87MG cell extract based on a 1.0 mg/mL extract load.



Serum of six individual healthy human donors was measured. The human APP concentration of detected samples was determined to be 8.66 ng/mL with a range of 1.49 - 19.08 ng/mL.



Cytometric bead array standard curve of MP01584-1, APP Recombinant Matched Antibody Pair, PBS Only. Capture antibody: 84829-3-PBS. Detection antibody: 84829-1-PBS. Standard: Ag22408. Range: 0.781-100 ng/mL