

For Research Use Only

EZH2 Recombinant antibody

Catalog Number: 84824-2-RR



Basic Information

Catalog Number: 84824-2-RR	GenBank Accession Number: BC010858	Purification Method: Protein A purification
Size: 100ul , Concentration: 1000 µg/ml by Nanodrop;	GeneID (NCBI): 2146	CloneNo.: 242309F11
Source: Rabbit	UNIPROT ID: Q15910	Recommended Dilutions: WB 1:1000-1:8000 IF/ICC 1:250-1:1000
Isotype: IgG	Full Name: enhancer of zeste homolog 2 (Drosophila)	
Immunogen Catalog Number: AG16789	Calculated MW: 751 aa, 86 kDa	
	Observed MW: 90-102 kDa	

Applications

Tested Applications: WB, IF/ICC, ELISA	Positive Controls: WB : Jurkat cells, Raji cells, NIH/3T3 cells, C6 cells
Species Specificity: human, mouse, rat	IF/ICC : HepG2 cells,

Background Information

EZH2 (enhancer of zeste homologue 2, also known as KMT6) is a member of Polycomb group (PcG) family and encodes a histone methyl transferase that has an essential role in promoting histone H3 lysine 27 trimethylation (H3K27me3) and epigenetic gene silencing. EZH2 is important for cell proliferation and inhibition of cell differentiation, and is implicated in cancer progression. Overexpression of EZH2 is a marker of advanced and metastatic disease in many solid tumors, including prostate and breast cancer. This antibody detected EZH2 protein as a single band with a molecular weight (MW) of 91-100 kDa in multiple cell lines. The phosphorylation may result in the higher molecular weight (calculated MW as 80-86 kDa). (20935635, 21367748)

Storage

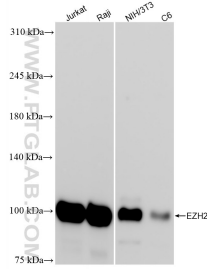
Storage:
Store at -20°C. Stable for one year after shipment.
Storage Buffer:
PBS with 0.02% sodium azide and 50% glycerol pH 7.3.
Aliquoting is unnecessary for -20°C storage

***** 20ul sizes contain 0.1%BSA**

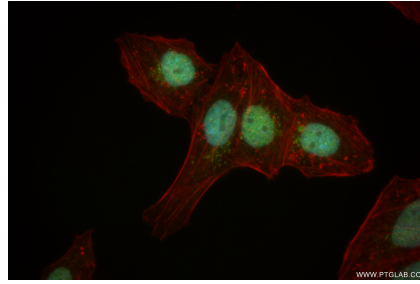
For technical support and original validation data for this product please contact:
T: 1 (888) 4PTGLAB (1-888-478-4522) (toll free in USA), or 1(312) 455-8498 (outside USA)
E: proteintech@ptglab.com
W: ptglab.com

This product is exclusively available under Proteintech Group brand and is not available to purchase from any other manufacturer.

Selected Validation Data



Various lysates were subjected to SDS PAGE followed by western blot with 84824-2-RR (EZH2 antibody) at dilution of 1:4000 incubated at room temperature for 1.5 hours.



Immunofluorescent analysis of (4% PFA) fixed HepG2 cells using EZH2 antibody (84824-2-RR, Clone: 242309F11) at dilution of 1:500 and CoraLite® 488-Conjugated Goat Anti-Rabbit IgG(H+L) (SA00013-2), CL594-Phalloidin (red).

Biolayer interferometry (BLI) kinetic assays of 84824-2-RR against Human EZH2 were performed. The affinity constant is 2.73 nM.