

For Research Use Only

EZH2 Recombinant antibody, PBS Only (Capture)

Catalog Number: 84824-2-PBS



Basic Information

Catalog Number: 84824-2-PBS	GenBank Accession Number: BC010858	Purification Method: Protein A purification
Size: 100ug, Concentration: 1 mg/ml by Nanodrop;	GeneID (NCBI): 2146	CloneNo.: 242309F11
Source: Rabbit	UNIPROT ID: Q15910	
Isotype: IgG	Full Name: enhancer of zeste homolog 2 (Drosophila)	
Immunogen Catalog Number: AG16789	Calculated MW: 751 aa, 86 kDa	
	Observed MW: 90-102 kDa	

Applications

Tested Applications:
WB, IF/ICC, Cytometric bead array, Indirect ELISA

Species Specificity:
human, mouse, rat

Product Information

84824-2-PBS targets EZH2 as part of a matched antibody pair:

MP01605-1: 84824-2-PBS capture and 84824-3-PBS detection (validated in Cytometric bead array)

MP01605-2: 84824-2-PBS capture and 84824-1-PBS detection (validated in Cytometric bead array)

Unconjugated rabbit recombinant monoclonal antibody in PBS only (BSA and azide free) storage buffer at a concentration of 1 mg/mL, ready for conjugation. Created using Proteintech's proprietary in-house recombinant technology. Recombinant production enables unrivalled batch-to-batch consistency, easy scale-up, and future security of supply.

This conjugation ready format makes antibodies ideal for use in many applications including: ELISAs, multiplex assays requiring matched pairs, mass cytometry, and multiplex imaging applications. Antibody use should be optimized by the end user for each application and assay.

Background Information

EZH2 (enhancer of zeste homologue 2, also known as KMT6) is a member of Polycomb group (PcG) family and encodes a histone methyl transferase that has an essential role in promoting histone H3 lysine 27 trimethylation (H3K27me3) and epigenetic gene silencing. EZH2 is important for cell proliferation and inhibition of cell differentiation, and is implicated in cancer progression. Overexpression of EZH2 is a marker of advanced and metastatic disease in many solid tumors, including prostate and breast cancer. This antibody detected EZH2 protein as a single band with a molecular weight (MW) of 91-100 kDa in multiple cell lines. The phosphorylation may result in the higher molecular weight (calculated MW as 80-86 kDa). (20935635, 21367748)

Storage

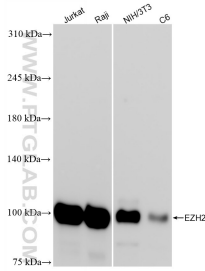
Storage:
Store at -80°C.

Storage Buffer:
PBS Only

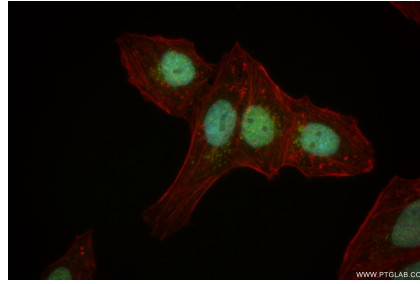
For technical support and original validation data for this product please contact:
T: 1 (888) 4PTGLAB (1-888-478-4522) (toll free in USA), or 1(312) 455-8498 (outside USA)
E: proteintech@ptglab.com
W: ptglab.com

This product is exclusively available under Proteintech Group brand and is not available to purchase from any other manufacturer.

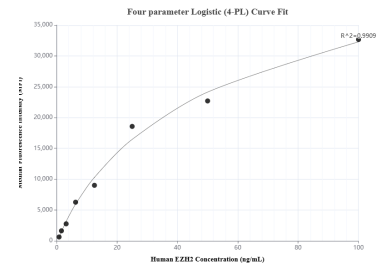
Selected Validation Data



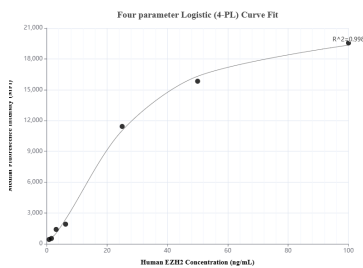
Various lysates were subjected to SDS PAGE followed by western blot with 84824-2-RR (EZH2 antibody) at dilution of 1:4000 incubated at room temperature for 1.5 hours. This data was developed using the same antibody clone with 84824-2-PBS in a different storage buffer formulation.



Immunofluorescent analysis of (4% PFA) fixed HepG2 cells using EZH2 antibody (84824-2-RR, Clone: 242309F11) at dilution of 1:500 and CoraLite® 488-Conjugated Goat Anti-Rabbit IgG(H+L) (SA00013-2), CL594-Phalloidin (red). This data was developed using the same antibody clone with 84824-2-PBS in a different storage buffer formulation.



Cytometric bead array standard curve of MP01605-1, EZH2 Recombinant Matched Antibody Pair, PBS Only. Capture antibody: 84824-2-PBS. Detection antibody: 84824-3-PBS. Standard: Ag16789. Range: 0.781-100 ng/mL.



Cytometric bead array standard curve of MP01605-2, EZH2 Recombinant Matched Antibody Pair, PBS Only. Capture antibody: 84824-2-PBS. Detection antibody: 84824-1-PBS. Standard: Ag16789. Range: 0.781-100 ng/mL.



Biolayer interferometry (BLI) kinetic assays of 84824-2-RR against Human EZH2 were performed. The affinity constant is 2.73 nM.