

For Research Use Only

# CYP24A1 Recombinant antibody, PBS Only

Catalog Number: 84821-3-PBS



## Basic Information

|  |   |   |
|--|---|---|
| <b>Catalog Number:</b><br>84821-3-PBS                      | <b>GenBank Accession Number:</b><br>BC109083                                | <b>Purification Method:</b><br>Protein A purification |
| <b>Size:</b><br>100ug, Concentration: 1 mg/ml by Nanodrop; | <b>GeneID (NCBI):</b><br>1591   | <b>CloneNo.:</b><br>242142F2                          |
| <b>Source:</b><br>Rabbit                                   | <b>UNIPROT ID:</b><br>Q07973  |   |
| <b>Isotype:</b><br>IgG                                     | <b>Full Name:</b><br>cytochrome P450, family 24, subfamily A, polypeptide 1 |   |
| <b>Immunogen Catalog Number:</b><br>AG17089                | <b>Calculated MW:</b><br>514 aa, 59 kDa                                     |   |
|  | <b>Observed MW:</b><br>51 kDa   |   |

## Applications

**Tested Applications:**  
WB, Indirect ELISA

**Species Specificity:**  
human, mouse, rat

## Background Information

CYP24A1(1,25-dihydroxyvitamin D(3) 24-hydroxylase, mitochondrial) catalyzes the NADPH-dependent 24-hydroxylation of calcidiol (25-hydroxyvitamin D3) and 1-alpha,25-dihydroxyvitamin D3. Cholecalciferol is metabolized by the 25-hydroxylases (CYP2R1 and CYP27A1) in the liver before 25-hydroxycholecalciferol (25(OH)D3) relocates to the circulation (PMID:20362668). The gene CYP24A1 has three isoforms, for the transit peptide "mitochondrial domain" removed, the MW of CYP24A1 will be 55-59 kDa, 47-51 kDa, and 43 kDa. This antibody is specific to CYP24A1.

## Storage

**Storage:**  
Store at -80°C.

**Storage Buffer:**  
PBS Only

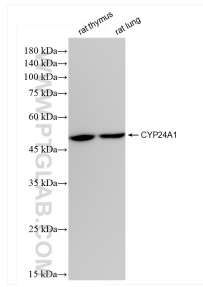
For technical support and original validation data for this product please contact:

T: 1 (888) 4PTGLAB (1-888-478-4522) (toll free in USA), or 1(312) 455-8498 (outside USA)

E: [proteintech@ptglab.com](mailto:proteintech@ptglab.com)  
W: [ptglab.com](http://ptglab.com)

This product is exclusively available under Proteintech Group brand and is not available to purchase from any other manufacturer.

## Selected Validation Data



Various lysates were subjected to SDS PAGE followed by western blot with 84821-3-RR (CYP24A1 antibody) at dilution of 1:10000 incubated at room temperature for 1.5 hours. This data was developed using the same antibody clone with 84821-3-PBS in a different storage buffer formulation.