

For Research Use Only

# Mouse FcεR1α Recombinant antibody, PBS Only

Catalog Number: 84816-4-PBS



## Basic Information

Catalog Number:

84816-4-PBS

Size:

100ug, Concentration: 1 mg/ml by  
Nanodrop;

Source:

Rabbit

Isotype:

IgG

GenBank Accession Number:

NM\_010184.2

GeneID (NCBI):

14125

UNIPROT ID:

P20489

Full Name:

Fc receptor, IgE, high affinity I, alpha  
polypeptide

Calculated MW:

29 kDa

Observed MW:

42 kDa

Purification Method:

Protein A purification

CloneNo.:

242008D7

## Applications

Tested Applications:

WB, Indirect ELISA

Species Specificity:

mouse

## Background Information

Fc epsilon Receptor I alpha (FcεR1α) is a single-pass type I membrane protein that contains 2 immunoglobulin-like domains. FcεR1α forms a tetrameric complex with one beta and two gamma subunits (PMID: 19406478). FcεR1 is the high-affinity receptor for the Fc region of immunoglobulin E (IgE) (PMID: 1532373). It is expressed on mast cells and basophils and plays a central role in the allergic response (PMID: 2148316).

## Storage

Storage:

Store at -80°C.

Storage Buffer:

PBS Only

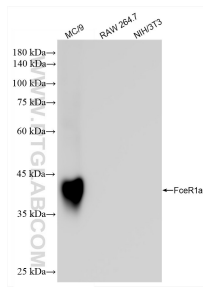
For technical support and original validation data for this product please contact:

T: 1 (888) 4PTGLAB (1-888-478-4522) (toll free  
in USA), or 1(312) 455-8498 (outside USA)

E: [proteintech@ptglab.com](mailto:proteintech@ptglab.com)  
W: [ptglab.com](http://ptglab.com)

This product is exclusively available under Proteintech Group brand and is not available to purchase from any other manufacturer.

## Selected Validation Data



Various lysates were subjected to SDS PAGE followed by western blot with 84816-4-RR (Fc-epsilon RI-alpha (FcεR1) antibody) at dilution of 1:10000 incubated at room temperature for 1.5 hours. This data was developed using the same antibody clone with 84816-4-PBS in a different storage buffer formulation.