

For Research Use Only

TLR6 Recombinant antibody

Catalog Number: 84811-2-RR



Basic Information

Catalog Number: 84811-2-RR	GenBank Accession Number: BC111755	Purification Method: Protein A purification
Size: 100ul , Concentration: 1000 µg/ml by Nanodrop;	GeneID (NCBI): 10333	CloneNo.: 241926F2
Source: Rabbit	UNIPROT ID: Q9Y2C9	Recommended Dilutions: IF-P 1:200-1:800
Isotype: IgG	Full Name: toll-like receptor 6	
	Calculated MW: 480 aa, 56 kDa	

Applications

Tested Applications: IF-P, ELISA	Positive Controls: IF-P : mouse spleen tissue,
Species Specificity: human, mouse	

Background Information

TLR6, also known as CD286, belongs to the Toll-like receptor (TLR) family which is important in the innate immune response to pathogens. TLRs are highly conserved from Drosophila to humans and share structural and functional similarities. TLR6 can form a heterodimer with TLR2. TLR6 and TLR2 are both recruited to the macrophage phagosome, where they recognize peptidoglycan, a Gram-positive pathogen component (PMID: 11095740). TLR6 interacts with CD36, following CD36 stimulation by oxLDL or amyloid-beta 42, and forms a heterodimer with TLR4. The trimeric complex is internalized and triggers an inflammatory response.

Storage

Storage:
Store at -20°C. Stable for one year after shipment.
Storage Buffer:
PBS with 0.02% sodium azide and 50% glycerol pH 7.3.
Aliquoting is unnecessary for -20°C storage

***** 20ul sizes contain 0.1%BSA**

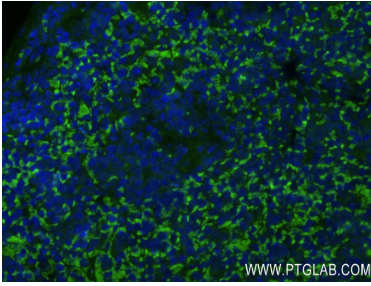
For technical support and original validation data for this product please contact:

T: 1 (888) 4PTGLAB (1-888-478-4522) (toll free in USA), or 1(312) 455-8498 (outside USA)

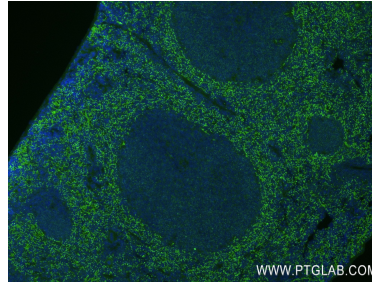
E: proteintech@ptglab.com
W: ptglab.com

This product is exclusively available under Proteintech Group brand and is not available to purchase from any other manufacturer.

Selected Validation Data



Immunofluorescent analysis of (4% PFA) fixed paraffin-embedded mouse spleen tissue using TLR6 antibody (84811-2-RR, Clone: 241926F2) at dilution of 1:400 and CoraLite® 488-Conjugated Goat Anti-Rabbit IgG(H+L) (SA00013-2). Heat mediated antigen retrieval with Tris-EDTA buffer (pH 9.0).



Immunofluorescent analysis of (4% PFA) fixed paraffin-embedded mouse spleen tissue using TLR6 antibody (84811-2-RR, Clone: 241926F2) at dilution of 1:400 and CoraLite® 488-Conjugated Goat Anti-Rabbit IgG(H+L) (SA00013-2). Heat mediated antigen retrieval with Tris-EDTA buffer (pH 9.0).