

For Research Use Only

# TLR6 Recombinant antibody, PBS Only (Detector)

Catalog Number: 84811-2-PBS



## Basic Information

<b>Catalog Number:</b> 84811-2-PBS	<b>GenBank Accession Number:</b> BC111755	<b>Purification Method:</b> Protein A purification
<b>Size:</b> 100ug, Concentration: 1 mg/ml by Nanodrop;	<b>GeneID (NCBI):</b> 10333	<b>CloneNo.:</b> 241926F2
<b>Source:</b> Rabbit	<b>UNIPROT ID:</b> Q9Y2C9	
<b>Isotype:</b> IgG	<b>Full Name:</b> toll-like receptor 6	
	<b>Calculated MW:</b> 480 aa, 56 kDa	

## Applications

**Tested Applications:**  
IF-P, Sandwich ELISA, Indirect ELISA, Sample test

**Species Specificity:**  
human, mouse

## Product Information

84811-2-PBS targets TLR6 as part of a matched antibody pair:

MP01727-1: 84811-3-PBS capture and 84811-2-PBS detection (validated in Sandwich ELISA)

Unconjugated rabbit recombinant monoclonal antibody in PBS only (BSA and azide free) storage buffer at a concentration of 1 mg/mL, ready for conjugation. Created using Proteintech's proprietary in-house recombinant technology. Recombinant production enables unrivalled batch-to-batch consistency, easy scale-up, and future security of supply.

This conjugation ready format makes antibodies ideal for use in many applications including: ELISAs, multiplex assays requiring matched pairs, mass cytometry, and multiplex imaging applications. Antibody use should be optimized by the end user for each application and assay.

## Background Information

TLR6, also known as CD286, belongs to the Toll-like receptor (TLR) family which is important in the innate immune response to pathogens. TLRs are highly conserved from Drosophila to humans and share structural and functional similarities. TLR6 can form a heterodimer with TLR2. TLR6 and TLR2 are both recruited to the macrophage phagosome, where they recognize peptidoglycan, a Gram-positive pathogen component (PMID: 11095740). TLR6 interacts with CD36, following CD36 stimulation by oxLDL or amyloid-beta 42, and forms a heterodimer with TLR4. The trimeric complex is internalized and triggers an inflammatory response.

## Storage

**Storage:**  
Store at -80°C.  
**Storage Buffer:**  
PBS Only

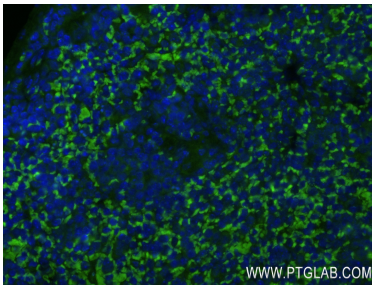
For technical support and original validation data for this product please contact:

T: 1 (888) 4PTGLAB (1-888-478-4522) (toll free in USA), or 1(312) 455-8498 (outside USA)

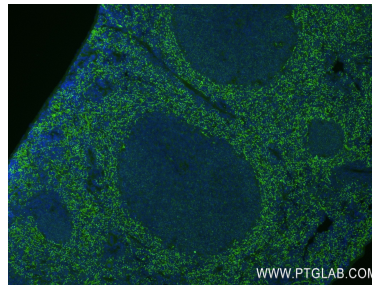
E: [proteintech@ptglab.com](mailto:proteintech@ptglab.com)  
W: [ptglab.com](http://ptglab.com)

**This product is exclusively available under Proteintech Group brand and is not available to purchase from any other manufacturer.**

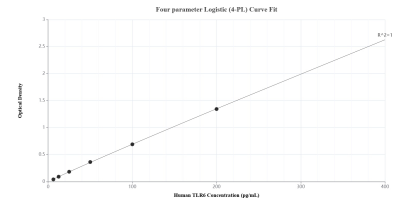
## Selected Validation Data



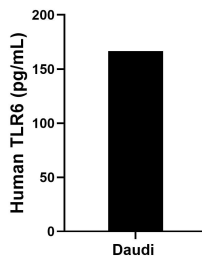
Immunofluorescent analysis of (4% PFA) fixed paraffin-embedded mouse spleen tissue using TLR6 antibody (84811-2-RR, Clone: 241926F2) at dilution of 1:400 and CoraLite®488-Conjugated Goat Anti-Rabbit IgG(H+L) (SA00013-2). Heat mediated antigen retrieval with Tris-EDTA buffer (pH 9.0). This data was developed using the same antibody clone with 84811-2-PBS in a different storage buffer formulation.



Immunofluorescent analysis of (4% PFA) fixed paraffin-embedded mouse spleen tissue using TLR6 antibody (84811-2-RR, Clone: 241926F2) at dilution of 1:400 and CoraLite®488-Conjugated Goat Anti-Rabbit IgG(H+L) (SA00013-2). Heat mediated antigen retrieval with Tris-EDTA buffer (pH 9.0). This data was developed using the same antibody clone with 84811-2-PBS in a different storage buffer formulation.



Sandwich ELISA standard curve of MP01727-1, Human TLR6 Recombinant Matched Antibody Pair - PBS only. 84811-3-PBS was coated to a plate as the capture antibody and incubated with serial dilutions of standard SY02306. 84811-2-PBS was HRP conjugated as the detection antibody. Range: 6.25-400 pg/mL



The mean TLR6 concentration was determined to be 166.5 pg/mL in Daudi cell extract based on a 1.8 mg/mL extract load.