

For Research Use Only

# KLRG1 Recombinant antibody

Catalog Number: 84785-4-RR



## Basic Information

<b>Catalog Number:</b> 84785-4-RR	<b>GenBank Accession Number:</b> NM_005810.4	<b>Purification Method:</b> Protein A purification
<b>Size:</b> 100ul , Concentration: 1000 ug/ml by Nanodrop;	<b>GeneID (NCBI):</b> 10219	<b>CloneNo.:</b> 242327B12
<b>Source:</b> Rabbit	<b>UNIPROT ID:</b> Q96E93-1	<b>Recommended Dilutions:</b> WB 1:5000-1:50000
<b>Isotype:</b> IgG	<b>Full Name:</b> killer cell lectin-like receptor subfamily G, member 1	
	<b>Calculated MW:</b> 22 kDa	
	<b>Observed MW:</b> 30-38 kDa	

## Applications

<b>Tested Applications:</b> WB, ELISA	<b>Positive Controls:</b> WB : Jurkat cells, mouse splenocytes, Raji cells, NK-92 cells, HeLa cells
<b>Species Specificity:</b> human, mouse	

## Background Information

KLRG1 (killer cell lectin-like receptor subfamily G, member 1) is a C-type lectin inhibitory receptor that contains an immunoreceptor tyrosine-based inhibitory motif (ITIM) in its cytoplasmic domain. KLRG1 is expressed by subsets of NK and T cells, existing both as a monomer and as a disulfide-linked homodimer (PMID: 10741410; 19604491). It is considered to be a cell differentiation marker for NK and T cells and is strongly induced by viral and other infections (PMID: 20373518). Through interactions with members of the cadherin family, KLRG1 plays an inhibitory role in NK- and T-cell function (PMID: 19009530; 20373518). Because of the glycosylation and disulfide bonds of the KLRG1 proteins, the observed molecular weights are typically 30-38 kDa (PMID: 17404256).

## Storage

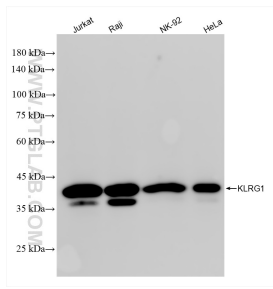
**Storage:**  
Store at -20°C. Stable for one year after shipment.  
**Storage Buffer:**  
PBS with 0.02% sodium azide and 50% glycerol pH 7.3.  
Aliquoting is unnecessary for -20°C storage

\*\*\* 20ul sizes contain 0.1% BSA

For technical support and original validation data for this product please contact:  
T: 1 (888) 4PTGLAB (1-888-478-4522) (toll free in USA), or 1(312) 455-8498 (outside USA)  
E: proteintech@ptglab.com  
W: ptglab.com

This product is exclusively available under Proteintech Group brand and is not available to purchase from any other manufacturer.

## Selected Validation Data



Various lysates were subjected to SDS PAGE followed by western blot with 84785-4-RR (KLRG1 antibody) at dilution of 1:10000 incubated at room temperature for 1.5 hours.