

For Research Use Only

# FGD1 Recombinant antibody, PBS Only (Capture)

Catalog Number: 84783-2-PBS



## Basic Information

<b>Catalog Number:</b> 84783-2-PBS	<b>GenBank Accession Number:</b> BC034530	<b>Purification Method:</b> Protein A purification
<b>Size:</b> 100ug, Concentration: 1 mg/ml by Nanodrop;	<b>GeneID (NCBI):</b> 2245	<b>CloneNo.:</b> 242314C3
<b>Source:</b> Rabbit	<b>UNIPROT ID:</b> P98174	
<b>Isotype:</b> IgG	<b>Full Name:</b> FYVE, RhoGEF and PH domain containing 1	
<b>Immunogen Catalog Number:</b> AG3861	<b>Calculated MW:</b> 901 aa, 91 kDa	
	<b>Observed MW:</b> 130 kDa	

## Applications

**Tested Applications:**  
WB, Cytometric bead array, Indirect ELISA

**Species Specificity:**  
human

## Product Information

84783-2-PBS targets FGD1 as part of a matched antibody pair:

MP01538-1: 84783-2-PBS capture and 84783-1-PBS detection (validated in Cytometric bead array)

Unconjugated rabbit recombinant monoclonal antibody in PBS only (BSA and azide free) storage buffer at a concentration of 1 mg/mL, ready for conjugation. Created using Proteintech's proprietary in-house recombinant technology. Recombinant production enables unrivalled batch-to-batch consistency, easy scale-up, and future security of supply.

This conjugation ready format makes antibodies ideal for use in many applications including: ELISAs, multiplex assays requiring matched pairs, mass cytometry, and multiplex imaging applications. Antibody use should be optimized by the end user for each application and assay.

## Background Information

FGD1 is also named as FGDY (Faciogenital dysplasia 1 protein), ZFYVE3 (Zinc finger FYVE domain-containing protein 3), Rho/Rac guanine nucleotide exchange factor FGD1 (Rho/Rac GEF), FYVE, RhoGEF and PH domain-containing protein 1. FGD1 activates CDC42, a member of the Ras-like family of Rho- and Rac proteins, by exchanging bound GDP for free GTP. And FGD1 plays a role in regulating the actin cytoskeleton and cell shape. (PMID: 8969170). FGD1 was markedly overexpressed and might be a prognostic biomarker in osteosarcoma patient specimens (PMID: 32194840). FGD1 is specific for the Rho GTPase cell division cycle 42 (CDC42) (PMID: 22854039).

## Storage

**Storage:**  
Store at -80°C.

**Storage Buffer:**  
PBS Only

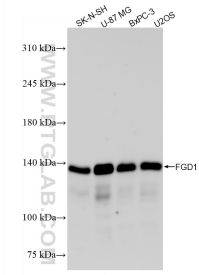
For technical support and original validation data for this product please contact:

T: 1 (888) 4PTGLAB (1-888-478-4522) (toll free in USA), or 1(312) 455-8498 (outside USA)

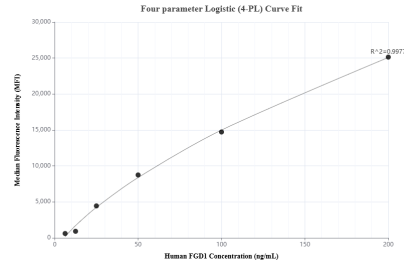
E: [proteintech@ptglab.com](mailto:proteintech@ptglab.com)  
W: [ptglab.com](http://ptglab.com)

**This product is exclusively available under Proteintech Group brand and is not available to purchase from any other manufacturer.**

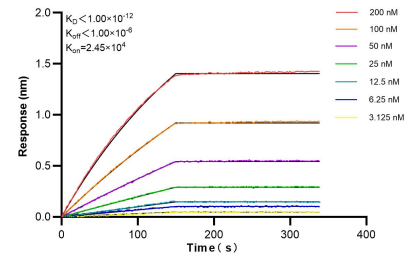
## Selected Validation Data



Various lysates were subjected to SDS PAGE followed by western blot with 84783-2-RR (FGD1 antibody) at dilution of 1:10000 incubated at room temperature for 1.5 hours. This data was developed using the same antibody clone with 84783-2-PBS in a different storage buffer formulation.



Cytometric bead array standard curve of MP01538-1, FGD1 Recombinant Matched Antibody Pair, PBS Only. Capture antibody: 84783-2-PBS. Detection antibody: 84783-1-PBS. Standard: Ag3861. Range: 6.25-200 ng/mL.



Bi-layer interferometry (BLI) kinetic assays of 84783-2-RR against Human FGD1 were performed. The affinity constant is below 1 pM.