

For Research Use Only

IGF1 Recombinant antibody

Catalog Number: 84782-5-RR



Basic Information

Catalog Number: 84782-5-RR	GenBank Accession Number: AAA41386	Purification Method: Protein A purification
Size: 100ul , Concentration: 1000 ug/ml by Nanodrop;	GeneID (NCBI): 24482	CloneNo.: 241890G6
Source: Rabbit	UNIPROT ID: P08025	Recommended Dilutions: WB 1:5000-1:50000
Isotype: IgG	Full Name: insulin-like growth factor 1	
	Calculated MW: 14kd	
	Observed MW: 12 kDa	

Applications

Tested Applications: WB, FC (Intra), ELISA	Positive Controls: WB : rat plasma,
Species Specificity: rat	

Background Information

IGF1, also named as IBP1, MGF, IGF-IA, and Somatomedin-C, belongs to the INS family. IGF1 is structurally and functionally related to INS but has a much higher growth-promoting activity. Altered expression or mutation of IGF-1 is associated with several human disorders, including type I diabetes and various forms of cancer. Defects in IGF1 are the cause of INS-like growth factor I deficiency (IGF1 deficiency) which is an autosomal recessive disorder characterized by growth retardation, sensorineural deafness, and mental retardation.

Storage

Storage:
Store at -20°C. Stable for one year after shipment.
Storage Buffer:
PBS with 0.02% sodium azide and 50% glycerol pH 7.3.
Aliquoting is unnecessary for -20°C storage

*** 20ul sizes contain 0.1% BSA

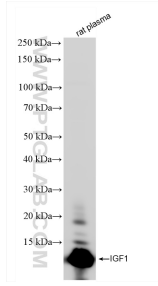
For technical support and original validation data for this product please contact:

T: 1 (888) 4PTGLAB (1-888-478-4522) (toll free in USA), or 1(312) 455-8498 (outside USA)

E: proteintech@ptglab.com
W: ptglab.com

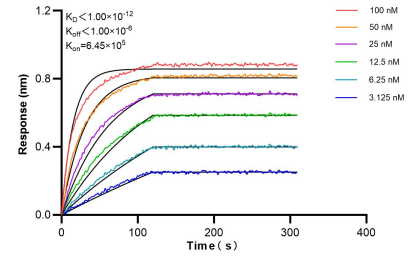
This product is exclusively available under Proteintech Group brand and is not available to purchase from any other manufacturer.

Selected Validation Data



rat plasma were subjected to SDS PAGE followed by western blot with 84782-5-RR (IGF-1 antibody) at dilution of 1:10000 incubated at room temperature for 1.5 hours.

1x10⁶ HEK-293T cells or IGF1 Transfected HEK-293T cells were intracellularly stained with 0.25 ug IGF1 Recombinant antibody (84782-5-RR, Clone:241890G6) and Multi-rAb CoraLite® Plus 647-Goat Anti-Rabbit Recombinant Secondary Antibody (H+L) (RGAR005). Cells were fixed with 4% PFA and permeabilized with Flow Cytometry Perm Buffer (PF00011-C).



Biolayer interferometry (BLI) kinetic assays of 84782-5-RR against Rat IGF1 were performed. The affinity constant is below 1 pM.