

For Research Use Only

Rat IGF1 Recombinant antibody, PBS Only (Capture)

Catalog Number: 84782-5-PBS



Basic Information

Catalog Number: 84782-5-PBS	GenBank Accession Number: AAA41386	Purification Method: Protein A purification
Size: 100ug, Concentration: 1 mg/ml by Nanodrop;	GeneID (NCBI): 24482	CloneNo.: 241890G6
Source: Rabbit	UNIPROT ID: P08025	
Isotype: IgG	Full Name: insulin-like growth factor 1	
	Calculated MW: 14kd	
	Observed MW: 12 kDa	

Applications

Tested Applications:
WB, FC (Intra), Cytometric bead array, Indirect ELISA

Species Specificity:
rat

Product Information

84782-5-PBS targets IGF1 as part of a matched antibody pair:

MP01547-2: 84782-5-PBS capture and 84782-1-PBS detection (validated in Cytometric bead array)

Unconjugated rabbit recombinant monoclonal antibody in PBS only (BSA and azide free) storage buffer at a concentration of 1 mg/mL, ready for conjugation. Created using Proteintech's proprietary in-house recombinant technology. Recombinant production enables unrivalled batch-to-batch consistency, easy scale-up, and future security of supply.

This conjugation ready format makes antibodies ideal for use in many applications including: ELISAs, multiplex assays requiring matched pairs, mass cytometry, and multiplex imaging applications. Antibody use should be optimized by the end user for each application and assay.

Background Information

IGF1, also named as IBP1, MGF, IGF-IA, and Somatomedin-C, belongs to the INS family. IGF1 is structurally and functionally related to INS but has a much higher growth-promoting activity. Altered expression or mutation of IGF-1 is associated with several human disorders, including type I diabetes and various forms of cancer. Defects in IGF1 are the cause of INS-like growth factor I deficiency (IGF1 deficiency) which is an autosomal recessive disorder characterized by growth retardation, sensorineural deafness, and mental retardation.

Storage

Storage:
Store at -80°C.
Storage Buffer:
PBS Only

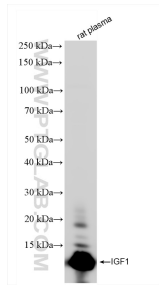
For technical support and original validation data for this product please contact:

T: 1 (888) 4PTGLAB (1-888-478-4522) (toll free in USA), or 1(312) 455-8498 (outside USA)

E: proteintech@ptglab.com
W: ptglab.com

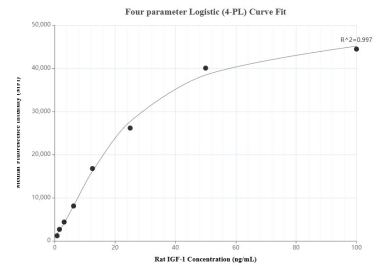
This product is exclusively available under Proteintech Group brand and is not available to purchase from any other manufacturer.

Selected Validation Data

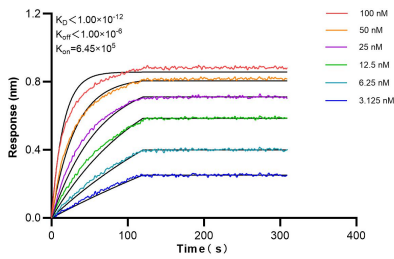


rat plasma were subjected to SDS PAGE followed by western blot with 84782-5-RR (IGF-1 antibody) at dilution of 1:10000 incubated at room temperature for 1.5 hours. This data was developed using the same antibody clone with 84782-5-PBS in a different storage buffer formulation.

1x10⁶ HEK-293T cells or IGF1 Transfected HEK-293T cells were intracellularly stained with 0.25 ug IGF1 Recombinant antibody (84782-5-RR, Clone:241890G6) and Multi-rAb Coralite ® Plus 647-Goat Anti-Rabbit Recombinant Secondary Antibody (H+L) (RGAR005). Cells were fixed with 4% PFA and permeabilized with Flow Cytometry Perm Buffer (PF00011-C). This data was developed using the same antibody clone with 84782-5-PBS in a different storage



Cytometric bead array standard curve of MP01547-2, RAT IGF1 Recombinant Matched Antibody Pair, PBS Only. Capture antibody: 84782-5-PBS. Detection antibody: 84782-1-PBS. Standard: Eg1976. Range: 0.781-100 ng/mL



Biolayer interferometry (BLI) kinetic assays of 84782-5-RR against Rat IGF1 were performed. The affinity constant is below 1 pM.