

For Research Use Only

Rat IGF1 Recombinant antibody, PBS Only (Detector)

Catalog Number: 84782-1-PBS



Basic Information

Catalog Number: 84782-1-PBS	GenBank Accession Number: AAA41386	Purification Method: Protein A purification
Size: 100ug, Concentration: 1 mg/ml by Nanodrop;	GeneID (NCBI): 24482	CloneNo.: 241890A11
Source: Rabbit	UNIPROT ID: P08025	
Isotype: IgG	Full Name: insulin-like growth factor 1	
Immunogen Catalog Number: EG1976	Calculated MW: 14kd	

Applications

Tested Applications:
Cytometric bead array, Sandwich ELISA, Indirect ELISA, Sample test

Species Specificity:
rat

Product Information

84782-1-PBS targets IGF1 as part of a matched antibody pair:

MP01547-2: 84782-5-PBS capture and 84782-1-PBS detection (validated in Cytometric bead array)

MP01547-3: 84782-6-PBS capture and 84782-1-PBS detection (validated in Sandwich ELISA)

Unconjugated rabbit recombinant monoclonal antibody in PBS only (BSA and azide free) storage buffer at a concentration of 1 mg/mL, ready for conjugation. Created using Proteintech's proprietary in-house recombinant technology. Recombinant production enables unrivalled batch-to-batch consistency, easy scale-up, and future security of supply.

This conjugation ready format makes antibodies ideal for use in many applications including: ELISAs, multiplex assays requiring matched pairs, mass cytometry, and multiplex imaging applications. Antibody use should be optimized by the end user for each application and assay.

Storage

Storage:
Store at -80°C.
Storage Buffer:
PBS only, pH7.3

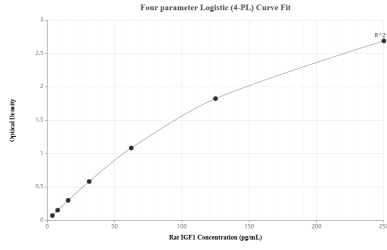
For technical support and original validation data for this product please contact:

T: 1 (888) 4PTGLAB (1-888-478-4522) (toll free in USA), or 1(312) 455-8498 (outside USA)

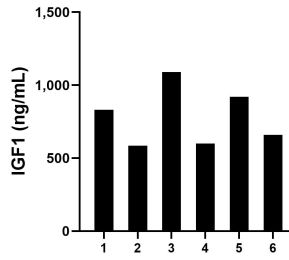
E: proteintech@ptglab.com
W: ptglab.com

This product is exclusively available under Proteintech Group brand and is not available to purchase from any other manufacturer.

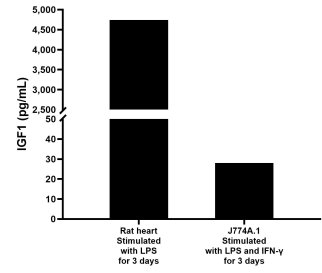
Selected Validation Data



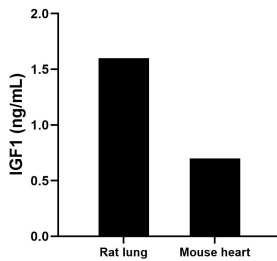
Sandwich ELISA standard curve of MP01547-3, Rat IGF1 Recombinant Matched Antibody Pair - PBS only. 84782-6-PBS was coated to a plate as the capture antibody and incubated with serial dilutions of standard Eg1976. 84782-1-PBS was HRP conjugated as the detection antibody. Range: 3.91-250 pg/mL



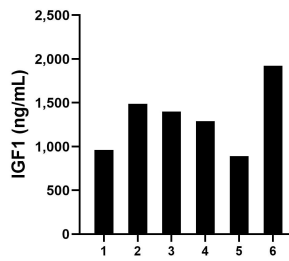
Serum of six mice was measured. The IGF1 concentration of detected samples was determined to be 780.6 pg/mL with a range of 585.0 - 1,089.6 ng/mL



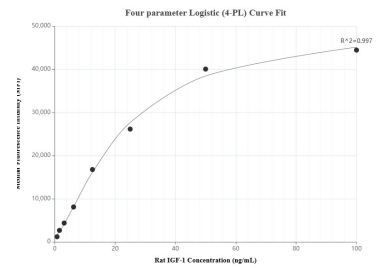
Rat heart tissue (chopped in 1-2 mm pieces in 30 mL of medium) was cultured for 3 days in RPMI supplemented with 10% fetal calf serum and 50 μM β-mercaptoethanol and stimulated with 2.5 ng/mL LPS. J774.A1 cells (1 x 10⁶ cells/mL) were cultured in DMEM supplemented with 10% fetal bovine serum, 20 ng/mL IFN-γ, and 1.0 μg/mL LPS for 3 days. Aliquots of the cell culture supernates were removed, assayed for levels of IGF1, and measured 4,740.2 pg/mL in rat heart cell



Rat lung tissue and mouse heart tissue were rinsed with 1X PBS to remove excess blood, homogenized in 20 mL of 1X PBS and stored overnight at ≤ -20 °C. Homogenates were thawed and centrifuged for 5 minutes at 5000 x g. Homogenates were assayed for IGF1 and measured 1.6 ng/mL in rat lung tissue homogenate based on a 0.3 mg/mL homogenate load, and 0.7 ng/mL in mouse heart tissue homogenate based on a 1.4 mg/mL homogenate load.



Serum of six rats was measured. The IGF1 concentration of detected samples was determined to be 1,325.1 pg/mL with a range of 892.6 - 1,922.3 ng/mL



Cytometric bead array standard curve of MP01547-2, RAT IGF1 Recombinant Matched Antibody Pair, PBS Only. Capture antibody: 84782-5-PBS. Detection antibody: 84782-1-PBS. Standard: Eg1976. Range: 0.781-100 ng/mL