

For Research Use Only

LRRFIP1 Recombinant antibody, PBS Only

Catalog Number: 84778-4-PBS



Basic Information

Catalog Number: 84778-4-PBS	GenBank Accession Number: BC108914	Purification Method: Protein A purification
Size: 100ug, Concentration: 1 mg/ml by Nanodrop;	GeneID (NCBI): 9208	CloneNo.: 242161C9
Source: Rabbit	UNIPROT ID: Q32MZ4	
Isotype: IgG	Full Name: leucine rich repeat (in FLII) interacting protein 1	
Immunogen Catalog Number: AG34760	Observed MW: 170 kDa	

Applications

Tested Applications:
WB, IF/ICC, Indirect ELISA

Species Specificity:
human

Background Information

LRRFIP1 is a transcriptional repressor which preferentially binds to the GC-rich consensus sequence (5'-AGCCCCGGCG-3') and may regulate expression of TNF, EGFR and PDGFA. The endogenous LRRFIP1/GCF2 proteins in several human cell lines, the one expressed from LRRFIP1/GCF2 cDNA in reticulolysates, and the recombinant LRRFIP1/GCF2 protein produced in bacteria have migrated as a band with a molecular weight (MW) of 160 kDa in sodium dodecyl sulfate-polyacrylamide gel electrophoresis (SDS-PAGE).

Storage

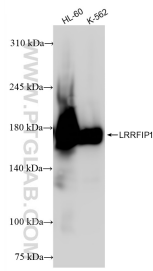
Storage:
Store at -80°C.

Storage Buffer:
PBS Only

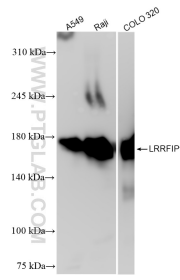
For technical support and original validation data for this product please contact:
T: 1 (888) 4PTGLAB (1-888-478-4522) (toll free in USA), or 1(312) 455-8498 (outside USA) E: proteintech@ptglab.com
W: ptglab.com

This product is exclusively available under Proteintech Group brand and is not available to purchase from any other manufacturer.

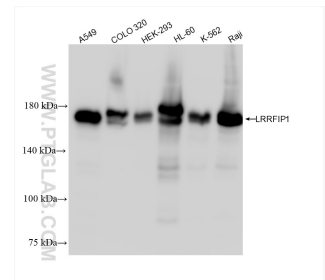
Selected Validation Data



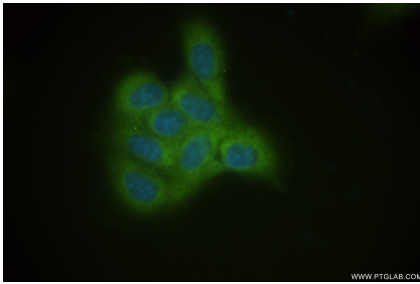
Various lysates were subjected to SDS PAGE followed by western blot with 84778-4-RR (LRRFIP1 antibody) at dilution of 1:10000 incubated at room temperature for 1.5 hours. This data was developed using the same antibody clone with 84778-4-PBS in a different storage buffer formulation.



Various lysates were subjected to SDS PAGE followed by western blot with 84778-4-RR (LRRFIP1 antibody) at dilution of 1:10000 incubated at room temperature for 1.5 hours. This data was developed using the same antibody clone with 84778-4-PBS in a different storage buffer formulation.



Various lysates were subjected to SDS PAGE followed by western blot with 84778-4-RR (LRRFIP1 antibody) at dilution of 1:20000 incubated at room temperature for 1.5 hours. This data was developed using the same antibody clone with 84778-4-PBS in a different storage buffer formulation.



Immunofluorescent analysis of (-20°C Ethanol) fixed A431 cells using LRRFIP1 antibody (84778-4-RR, Clone: 242161C9) at dilution of 1:400 and CoraLite®488-Conjugated Goat Anti-Rabbit IgG(H+L) (SA00013-2). This data was developed using the same antibody clone with 84778-4-PBS in a different storage buffer formulation.