

For Research Use Only

# RAB21 Recombinant antibody

Catalog Number: 84776-2-RR



## Basic Information

<b>Catalog Number:</b> 84776-2-RR	<b>GenBank Accession Number:</b> NM_014999	<b>Purification Method:</b> Protein A purification
<b>Size:</b> 100ul, Concentration: 1000 µg/ml by Nanodrop;	<b>GeneID (NCBI):</b> 23011	<b>CloneNo.:</b> 242117C4
<b>Source:</b> Rabbit	<b>UNIPROT ID:</b> Q9UL25	<b>Recommended Dilutions:</b> WB 1:1000-1:4000 IHC 1:200-1:800 IF/ICC 1:125-1:500
<b>Isotype:</b> IgG	<b>Full Name:</b> RAB21, member RAS oncogene family	
<b>Immunogen Catalog Number:</b> AG35291	<b>Calculated MW:</b> 24 kDa	
	<b>Observed MW:</b> 24 kDa	

## Applications

**Tested Applications:**  
WB, IHC, IF/ICC, ELISA

**Species Specificity:**  
human, mouse, rat

**Note-IHC: suggested antigen retrieval with TE buffer pH 9.0; (\*) Alternatively, antigen retrieval may be performed with citrate buffer pH 6.0**

**Positive Controls:**

**WB:** HeLa cells, HepG2 cells, LNCaP cells, MCF-7 cells, MDA-MB-231 cells

**IHC:** human colon tissue, mouse testis tissue

**IF/ICC:** HeLa cells,

## Background Information

Small GTPase Rab21 is a ubiquitously expressed and has recently been shown to associate with the  $\alpha$  tails of several integrins via the shared conserved membrane proximal sequence, thus regulating cell adhesion and migration via controlling the endo/exocytic trafficking of most integrin heterodimers (PMID: 18804435). Rab21 is required for the pruning of the immature neurites during the multipolar-to-bipolar transition (PMID: 36683567). Knock down of Rab21 impairs integrin-mediated cell adhesion and motility, whereas its overexpression stimulates cell migration and cancer cell adhesion to collagen and human bone (PMID: 16754960).

## Storage

**Storage:**

Store at -20°C. Stable for one year after shipment.

**Storage Buffer:**

PBS with 0.02% sodium azide and 50% glycerol pH 7.3.

Aliquoting is unnecessary for -20°C storage

**\*\*\* 20ul sizes contain 0.1% BSA**

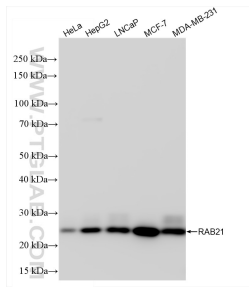
For technical support and original validation data for this product please contact:

T: 1 (888) 4PTGLAB (1-888-478-4522) (toll free in USA), or 1(312) 455-8498 (outside USA)

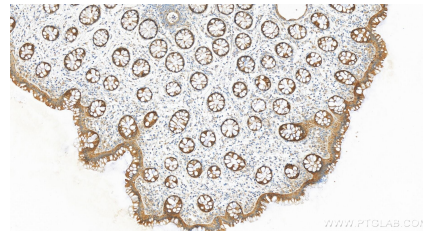
E: [proteintech@ptglab.com](mailto:proteintech@ptglab.com)  
W: [ptglab.com](http://ptglab.com)

**This product is exclusively available under Proteintech Group brand and is not available to purchase from any other manufacturer.**

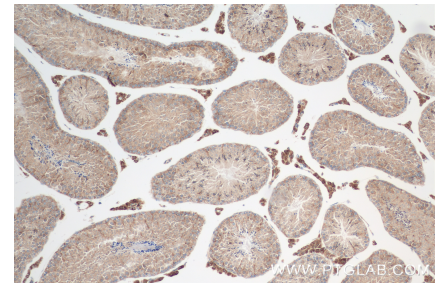
## Selected Validation Data



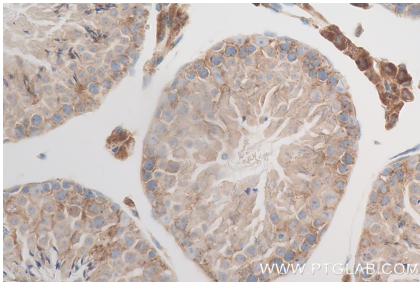
Various lysates were subjected to SDS PAGE followed by western blot with 84776-2-RR (RAB21 antibody) at dilution of 1:2000 incubated at room temperature for 1.5 hours.



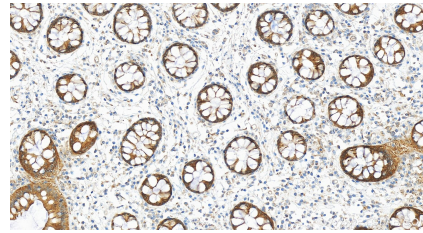
Immunohistochemical analysis of paraffin-embedded human colon tissue slide using 84776-2-RR (RAB21 antibody) at dilution of 1:400 (under 10x lens). Heat mediated antigen retrieval with Tris-EDTA buffer (pH 9.0).



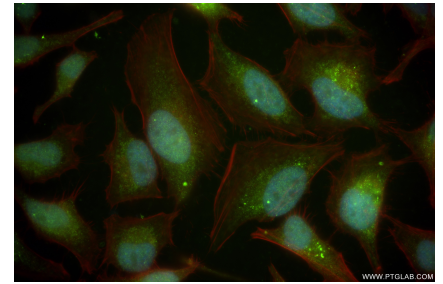
Immunohistochemical analysis of paraffin-embedded mouse testis tissue slide using 84776-2-RR (RAB21 antibody) at dilution of 1:400 (under 10x lens). Heat mediated antigen retrieval with Tris-EDTA buffer (pH 9.0).



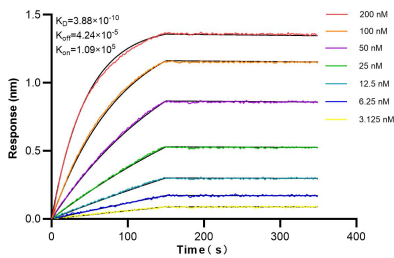
Immunohistochemical analysis of paraffin-embedded mouse testis tissue slide using 84776-2-RR (RAB21 antibody) at dilution of 1:400 (under 40x lens). Heat mediated antigen retrieval with Tris-EDTA buffer (pH 9.0).



Immunohistochemical analysis of paraffin-embedded human colon tissue slide using 84776-2-RR (RAB21 antibody) at dilution of 1:400 (under 20x lens). Heat mediated antigen retrieval with Tris-EDTA buffer (pH 9.0).



Immunofluorescent analysis of (4% PFA) fixed HeLa cells using RAB21 antibody (84776-2-RR, Clone: 242117C4) at dilution of 1:250 and CoraLite@488-Conjugated Goat Anti-Rabbit IgG(H+L) (SA00013-2), CL594-Phalloidin (red).



Biolayer interferometry (BLI) kinetic assays of 84776-2-RR against Human RAB21 were performed. The affinity constant is 0.388 nM.