

For Research Use Only

# APOE Recombinant antibody, PBS Only

Catalog Number: 84775-7-PBS



## Basic Information

<b>Catalog Number:</b> 84775-7-PBS	<b>GenBank Accession Number:</b> BC003557	<b>Purification Method:</b> Protein A purification
<b>Size:</b> 100ug, Concentration: 1 mg/ml by Nanodrop;	<b>GeneID (NCBI):</b> 348	<b>CloneNo.:</b> 242310B2
<b>Source:</b> Rabbit	<b>UNIPROT ID:</b> P02649	
<b>Isotype:</b> IgG	<b>Full Name:</b> Apolipoprotein E	
	<b>Calculated MW:</b> 36 kDa	

## Applications

**Tested Applications:**  
IHC, IF/ICC, Indirect ELISA

**Species Specificity:**  
human, mouse

## Background Information

The apolipoprotein E (APOE) is a 299-amino acid polypeptide that mediates the binding, internalization, and catabolism of lipoprotein particles, and also serves as a ligand for the LDL (apo B/E) receptor and for the specific apo-E receptor (chylomicron remnant) of hepatic tissues. The very strong association of the APOE  $\epsilon 4$  allele with AD risk and its role in the accumulation of amyloid  $\beta$  in brains of people and animal models solidify the biological relevance of APOE isoforms but do not provide mechanistic insight (PMID: 9831633).

## Storage

**Storage:**  
Store at  $-80^{\circ}\text{C}$ .  
**Storage Buffer:**  
PBS Only

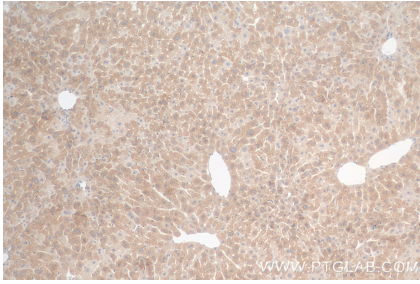
For technical support and original validation data for this product please contact:

T: 1 (888) 4PTGLAB (1-888-478-4522) (toll free in USA), or 1(312) 455-8498 (outside USA)

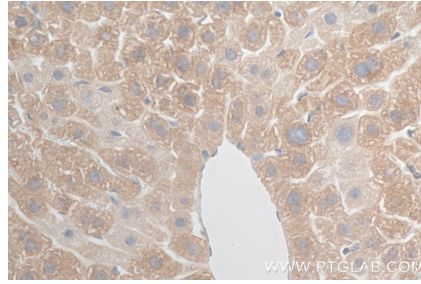
E: [proteintech@ptglab.com](mailto:proteintech@ptglab.com)  
W: [ptglab.com](http://ptglab.com)

**This product is exclusively available under Proteintech Group brand and is not available to purchase from any other manufacturer.**

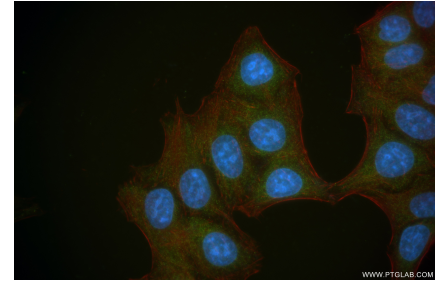
## Selected Validation Data



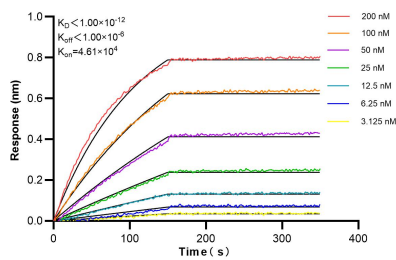
Immunohistochemical analysis of paraffin-embedded mouse liver tissue slide using 84775-7-RR (APOE antibody) at dilution of 1:400 (under 10x lens). Heat mediated antigen retrieval with Tris-EDTA buffer (pH 9.0). This data was developed using the same antibody clone with 84775-7-PBS in a different storage buffer formulation.



Immunohistochemical analysis of paraffin-embedded mouse liver tissue slide using 84775-7-RR (APOE antibody) at dilution of 1:400 (under 40x lens). Heat mediated antigen retrieval with Tris-EDTA buffer (pH 9.0). This data was developed using the same antibody clone with 84775-7-PBS in a different storage buffer formulation.



Immunofluorescent analysis of (-20°C Ethanol) fixed HepG2 cells using APOE antibody (84775-7-RR, Clone: 242310B2) at dilution of 1:200 and CoraLite®488-Conjugated Goat Anti-Rabbit IgG(H+L) (SA00013-2), CL594-Phalloidin (red). This data was developed using the same antibody clone with 84775-7-PBS in a different storage buffer formulation.



Biolayer interferometry (BLI) kinetic assays of 84775-7-RR against Human APOE were performed. The affinity constant is below 1 pM.