

For Research Use Only

APOE Recombinant antibody, PBS Only (Capture)

Catalog Number: 84775-5-PBS



Basic Information

Catalog Number: 84775-5-PBS	GenBank Accession Number: BC003557	Purification Method: Protein A purification
Size: 100ug, Concentration: 1 mg/ml by Nanodrop;	GeneID (NCBI): 348	CloneNo.: 242310B5
Source: Rabbit	UNIPROT ID: P02649	
Isotype: IgG	Full Name: Apolipoprotein E	
	Calculated MW: 36 kDa	

Applications

Tested Applications:
Sandwich ELISA, Indirect ELISA, Sample test

Species Specificity:
human

Product Information

84775-5-PBS targets APOE as part of a matched antibody pair.

MP01558-3: 84775-5-PBS capture and 84775-4-PBS detection (validated in Sandwich ELISA)

Unconjugated rabbit recombinant monoclonal antibody in PBS only (BSA and azide free) storage buffer at a concentration of 1 mg/mL, ready for conjugation. Created using Proteintech's proprietary in-house recombinant technology. Recombinant production enables unrivalled batch-to-batch consistency, easy scale-up, and future security of supply.

This conjugation ready format makes antibodies ideal for use in many applications including: ELISAs, multiplex assays requiring matched pairs, mass cytometry, and multiplex imaging applications. Antibody use should be optimized by the end user for each application and assay.

Storage

Storage:
Store at -80°C.
Storage Buffer:
PBS Only

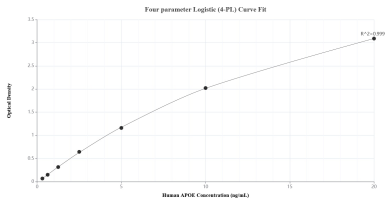
For technical support and original validation data for this product please contact:

T: 1 (888) 4PTGLAB (1-888-478-4522) (toll free
in USA), or 1(312) 455-8498 (outside USA)

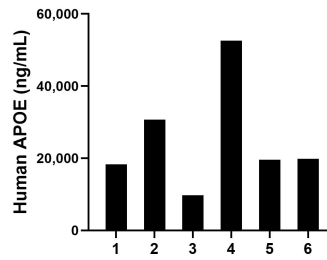
E: proteintech@ptglab.com
W: ptglab.com

This product is exclusively available under Proteintech Group brand and is not available to purchase from any other manufacturer.

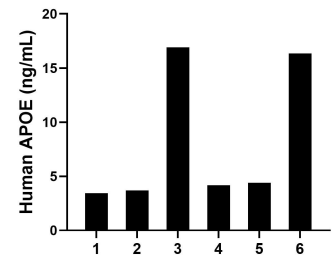
Selected Validation Data



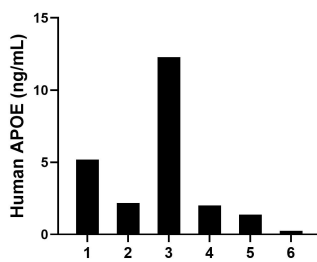
Sandwich ELISA standard curve of MP01558-3, Human APOE Recombinant Matched Antibody Pair - PBS only. 84775-5-PBS was coated to a plate as the capture antibody and incubated with serial dilutions of standard Eg0448. 84775-4-PBS was HRP conjugated as the detection antibody. Range: 0.313-10 ng/mL



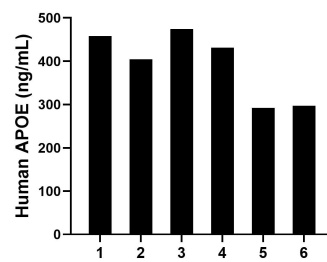
Serum of six individual healthy human donors was measured. The APOE concentration of detected samples was determined to be 25,140.92 ng/mL with a range of 9,706.32-52,603.90 ng/mL



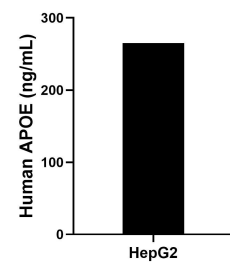
Saliva of six individual healthy human donors was measured. The APOE concentration of detected samples was determined to be 8.16 ng/mL with a range of 3.43-16.91 ng/mL



Urine of six individual healthy human donors was measured. The APOE concentration of detected samples was determined to be 3.88 ng/mL with a range of 0.26-12.28 ng/mL



Human milk of six individual healthy human donors was measured. The APOE concentration of detected samples was determined to be 392.90 ng/mL with a range of 291.94-474.33 ng/mL



HepG2 were cultured in DMEM supplemented with 10% fetal bovine serum, 2.5 mM L-glutamine, 100 U/mL penicillin, and 100 µg/mL streptomycin sulfate. An aliquot of the cell culture supernate was removed, assayed for human APOE, and measured 264.90 ng/mL