

For Research Use Only

# MAGI3 Recombinant antibody, PBS Only

Catalog Number: 84771-4-PBS



## Basic Information

<b>Catalog Number:</b> 84771-4-PBS	<b>GenBank Accession Number:</b> BC130409	<b>Purification Method:</b> Protein A purification
<b>Size:</b> 100ug, Concentration: 1 mg/ml by Nanodrop;	<b>GeneID (NCBI):</b> 260425	<b>CloneNo.:</b> 242212C9
<b>Source:</b> Rabbit	<b>UNIPROT ID:</b> Q5TCQ9	
<b>Isotype:</b> IgG	<b>Full Name:</b> membrane associated guanylate kinase, WW and PDZ domain containing 3	
<b>Immunogen Catalog Number:</b> AG18394	<b>Calculated MW:</b> 1481 aa, 163 kDa	
	<b>Observed MW:</b> 140 kDa	

## Applications

**Tested Applications:**  
WB, IF-P, Indirect ELISA

**Species Specificity:**  
human, mouse, rat

## Background Information

MAGI proteins are scaffolding proteins, belonging to the Membrane-Associated Guanylate Kinase Inverted proteins of the MAGUK family. There are three members of the MAGI subfamily, MAGI-1, MAGI-2, and MAGI-3. They are comprised of 6 PDZ domains, 2 WW domains, and 1 GUK domain. They have been proven to mediate the transport and signal transduction of various G protein-coupled receptors (GPCRs) (PMID: 29625175). The antibody is specific to MAGI3.

## Storage

**Storage:**  
Store at -80°C.

**Storage Buffer:**  
PBS Only

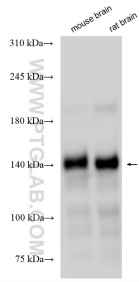
For technical support and original validation data for this product please contact:

T: 1 (888) 4PTGLAB (1-888-478-4522) (toll free in USA), or 1(312) 455-8498 (outside USA)

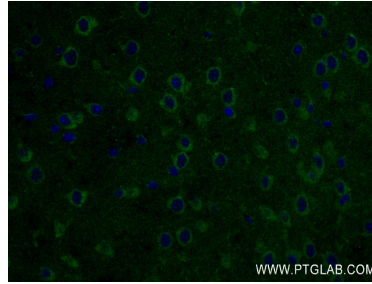
E: [proteintech@ptglab.com](mailto:proteintech@ptglab.com)  
W: [ptglab.com](http://ptglab.com)

**This product is exclusively available under Proteintech Group brand and is not available to purchase from any other manufacturer.**

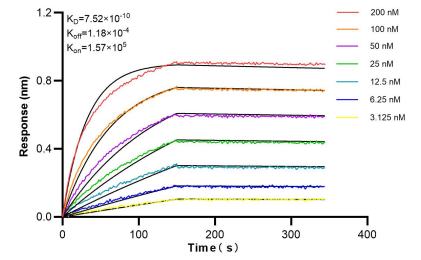
## Selected Validation Data



Various lysates were subjected to SDS PAGE followed by western blot with 84771-4-RR (MAGI3 antibody) at dilution of 1:10000 incubated at room temperature for 1.5 hours. This data was developed using the same antibody clone with 84771-4-PBS in a different storage buffer formulation.



Immunofluorescent analysis of (4% PFA) fixed paraffin-embedded mouse brain tissue using MAGI3 antibody (84771-4-RR, Clone: 242212C9) at dilution of 1:400 and CoraLite®488-Conjugated Goat Anti-Rabbit IgG(H+L) (SA00013-2). Heat mediated antigen retrieval with Tris-EDTA buffer (pH 9.0). This data was developed using the same antibody clone with 84771-4-PBS in a different storage buffer formulation.



Bi-layer interferometry (BLI) kinetic assays of 84771-4-RR against Human MAGI3 were performed. The affinity constant is 0.752 nM.