

For Research Use Only

PACSIN2 Recombinant antibody

Catalog Number: 84763-4-RR



Basic Information

Catalog Number: 84763-4-RR	GenBank Accession Number: BC008037	Purification Method: Protein A purification
Size: 100ul , Concentration: 1000 ug/ml by Nanodrop;	GeneID (NCBI): 11252	CloneNo.: 242193H3
Source: Rabbit	UNIPROT ID: Q9UNF0	Recommended Dilutions: WB 1:2000-1:10000 IF/ICC 1:125-1:500
Isotype: IgG	Full Name: protein kinase C and casein kinase substrate in neurons 2	
Immunogen Catalog Number: AG0809	Calculated MW: 56 kDa	
	Observed MW: 60 kDa	

Applications

Tested Applications: WB, IF/ICC, ELISA	Positive Controls: WB : A431 cells, HepG2 cells, NIH/3T3 cells IF/ICC : HepG2 cells, NIH/3T3 cells
Species Specificity: human, mouse	

Background Information

Peripheral membrane proteins of the Bin/amphiphysin/Rvs (BAR) and Fer-CIP4 homology-BAR (F-BAR) family participate in cellular membrane trafficking (PMID: 19549836). PACSIN2 (also known as syndapin-2) is a member of the protein kinase C and casein kinase substrate in neurons (PACSIN) family, which are membrane-binding proteins characterized by an amino-terminal F-BAR domain. PACSIN2 plays a role in intracellular vesicle-mediated transport. It is involved in the endocytosis of cell-surface receptors like the EGF receptor, contributing to its internalization (PMID: 23129763). PACSIN2 also has a role in caveolae membrane sculpting (PMID: 21610094).

Storage

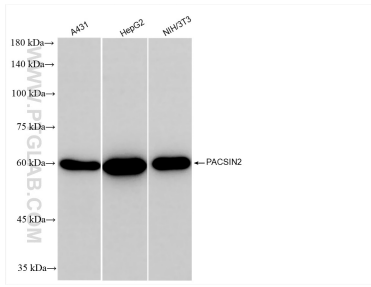
Storage:
Store at -20°C. Stable for one year after shipment.
Storage Buffer:
PBS with 0.02% sodium azide and 50% glycerol pH 7.3.
Aliquoting is unnecessary for -20°C storage

*** 20ul sizes contain 0.1% BSA

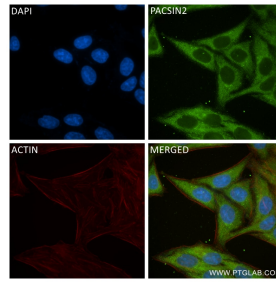
For technical support and original validation data for this product please contact:
T: 1 (888) 4PTGLAB (1-888-478-4522) (toll free in USA), or 1(312) 455-8498 (outside USA)
E: proteintech@ptglab.com
W: ptglab.com

This product is exclusively available under Proteintech Group brand and is not available to purchase from any other manufacturer.

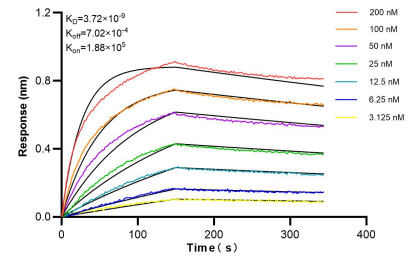
Selected Validation Data



Various lysates were subjected to SDS PAGE followed by western blot with 84763-4-RR (PACSIN2 antibody) at dilution of 1:5000 incubated at room temperature for 1.5 hours.



Immunofluorescent analysis of (-20°C Ethanol) fixed HepG2 cells using PACSIN2 antibody (84763-4-RR, Clone: 242193H3) at dilution of 1:250 and CoraLite®488-Conjugated Goat Anti-Rabbit IgG(H+L) (SA00013-2), CL594-Phalloidin (red).



Bi-layer interferometry (BLI) kinetic assays of 84763-4-RR against Human PACSIN2 were performed. The affinity constant is 3.72 nM.