

For Research Use Only

# PACSIN2 Recombinant antibody, PBS Only

Catalog Number: 84763-4-PBS



## Basic Information

<b>Catalog Number:</b> 84763-4-PBS	<b>GenBank Accession Number:</b> BC008037	<b>Purification Method:</b> Protein A purification
<b>Size:</b> 100ug , Concentration: 1 mg/ml by Nanodrop;	<b>GeneID (NCBI):</b> 11252	<b>CloneNo.:</b> 242193H3
<b>Source:</b> Rabbit	<b>UNIPROT ID:</b> Q9UNF0	
<b>Isotype:</b> IgG	<b>Full Name:</b> protein kinase C and casein kinase substrate in neurons 2	
<b>Immunogen Catalog Number:</b> AG0809	<b>Calculated MW:</b> 56 kDa	
	<b>Observed MW:</b> 60 kDa	

## Applications

**Tested Applications:**  
WB, IF/ICC, Indirect ELISA

**Species Specificity:**  
human, mouse

## Background Information

Peripheral membrane proteins of the Bin/amphiphysin/Rvs (BAR) and Fer-CIP4 homology-BAR (F-BAR) family participate in cellular membrane trafficking (PMID: 19549836). PACSIN2 (also known as syndapin-2) is a member of the protein kinase C and casein kinase substrate in neurons (PACSIN) family, which are membrane-binding proteins characterized by an amino-terminal F-BAR domain. PACSIN2 plays a role in intracellular vesicle-mediated transport. It is involved in the endocytosis of cell-surface receptors like the EGF receptor, contributing to its internalization (PMID: 23129763). PACSIN2 also has a role in caveolae membrane sculpting (PMID: 21610094).

## Storage

**Storage:**  
Store at -80°C.

**Storage Buffer:**  
PBS Only

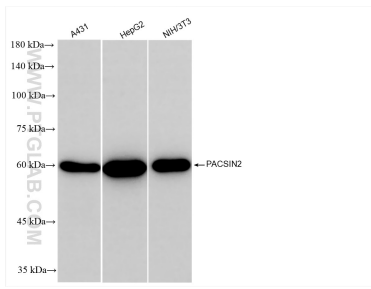
For technical support and original validation data for this product please contact:

T: 1 (888) 4PTGLAB (1-888-478-4522) (toll free in USA), or 1(312) 455-8498 (outside USA)

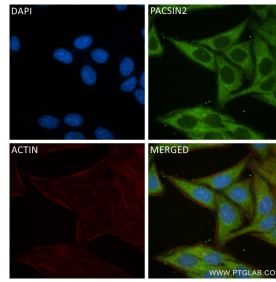
E: [proteintech@ptglab.com](mailto:proteintech@ptglab.com)  
W: [ptglab.com](http://ptglab.com)

**This product is exclusively available under Proteintech Group brand and is not available to purchase from any other manufacturer.**

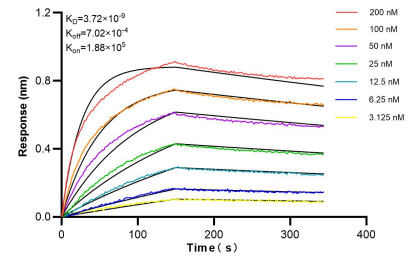
## Selected Validation Data



Various lysates were subjected to SDS PAGE followed by western blot with 84763-4-RR (PACSIN2 antibody) at dilution of 1:5000 incubated at room temperature for 1.5 hours. This data was developed using the same antibody clone with 84763-4-PBS in a different storage buffer formulation.



Immunofluorescent analysis of (-20°C Ethanol) fixed HepG2 cells using PACSIN2 antibody (84763-4-RR, Clone: 242193H3) at dilution of 1:250 and CoraLite®488-Conjugated Goat Anti-Rabbit IgG(H+L) (SA00013-2), CL594-Phalloidin (red). This data was developed using the same antibody clone with 84763-4-PBS in a different storage buffer formulation.



Bi-layer interferometry (BLI) kinetic assays of 84763-4-RR against Human PACSIN2 were performed. The affinity constant is 3.72 nM.