

For Research Use Only

IL-4 R alpha/CD124 Recombinant antibody

Catalog Number: 84758-5-RR



Basic Information

Catalog Number: 84758-5-RR	GenBank Accession Number: NM_001008700.3	Purification Method: Protein A purification
Size: 100ul , Concentration: 1000 µg/ml by Nanodrop;	GeneID (NCBI): 16190	CloneNo.: 242262E3
Source: Rabbit	UNIPROT ID: P16382-1	Recommended Dilutions: WB 1:1000-1:4000
Isotype: IgG	Full Name: interleukin 4 receptor, alpha	
	Calculated MW: 88 kDa	
	Observed MW: 130 kDa	

Applications

Tested Applications: WB, ELISA	Positive Controls: WB : NIH/3T3 cells,
Species Specificity: mouse	

Background Information

IL-4 receptor alpha chain (IL-4RA), also known as CD124, is a transmembrane glycoprotein expressed on a wide variety of hematopoietic and non-hematopoietic cells. It is a receptor for both IL-4 and IL-13. IL-4RA can complex with the common gamma chain (IL-2R gamma or CD132) and utilizes JAK1 and JAK2 for signal transduction, while complexes of IL-4RA with IL-13RA1 subunit mediate signals via JAK2 and Tyk2. The IL-4 response is involved in promoting Th2 differentiation. The IL-4/IL-13 responses are involved in regulating IgE production and, chemokine and mucus production at sites of allergic inflammation.

Storage

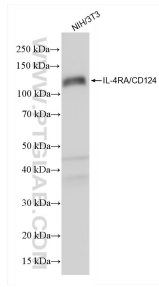
Storage:
Store at -20°C. Stable for one year after shipment.
Storage Buffer:
PBS with 0.02% sodium azide and 50% glycerol pH 7.3.
Aliquoting is unnecessary for -20°C storage

*** 20ul sizes contain 0.1% BSA

For technical support and original validation data for this product please contact:
T: 1 (888) 4PTGLAB (1-888-478-4522) (toll free in USA), or 1(312) 455-8498 (outside USA)
E: proteintech@ptglab.com
W: ptglab.com

This product is exclusively available under Proteintech Group brand and is not available to purchase from any other manufacturer.

Selected Validation Data



NIH/3T3 cells were subjected to SDS PAGE followed by western blot with 84758-5-RR (IL-4 R alpha/CD124 antibody) at dilution of 1:2000 incubated at room temperature for 1.5 hours.