

For Research Use Only

RB1CC1 Recombinant antibody

Catalog Number: 84757-4-RR



Basic Information

Catalog Number: 84757-4-RR	GenBank Accession Number: BC017556	Purification Method: Protein A purification
Size: 100ul , Concentration: 1000 µg/ml by Nanodrop;	GeneID (NCBI): 9821	CloneNo.: 242204C1
Source: Rabbit	UNIPROT ID: Q8TDY2	Recommended Dilutions: WB 1:2000-1:10000
Isotype: IgG	Full Name: RB1-inducible coiled-coil 1	
Immunogen Catalog Number: AG10508	Calculated MW: 1594 aa, 183 kDa	
	Observed MW: 220 kDa	

Applications

Tested Applications:
WB, ELISA

Species Specificity:
human, mouse, rat

Positive Controls:

WB : HeLa cells, A549 cells, HepG2 cells, Jurkat cells, K-562 cells, NIH/3T3 cells, HSC-T6 cells

Background Information

RB1CC1, also named as RBICC, is implicated in the regulation of RB1 expression and functions as a DNA-binding transcription factor. It is a potent regulator of the RB1 pathway and a mediator that plays a crucial role in muscular differentiation. Its expression is, thus, a prerequisite for myogenic differentiation. Involved in autophagy. RB1CC1 is required for autophagosome formation. It is probably involved in the tumorigenesis of breast cancer. RB1CC1 is frequently mutated in breast cancer and shows characteristics of a classical tumor suppressor gene.

Storage

Storage:

Store at -20°C. Stable for one year after shipment.

Storage Buffer:

PBS with 0.02% sodium azide and 50% glycerol pH 7.3.

Aliquoting is unnecessary for -20°C storage

*** 20ul sizes contain 0.1% BSA

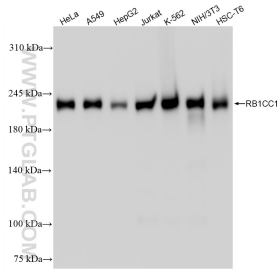
For technical support and original validation data for this product please contact:

T: 1 (888) 4PTGLAB (1-888-478-4522) (toll free in USA), or 1(312) 455-8498 (outside USA)

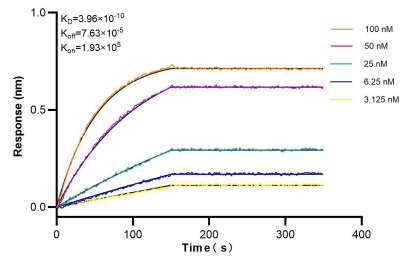
E: proteintech@ptglab.com
W: ptglab.com

This product is exclusively available under Proteintech Group brand and is not available to purchase from any other manufacturer.

Selected Validation Data



Various lysates were subjected to SDS PAGE followed by western blot with 84757-4-RR (RB1CC1 antibody) at dilution of 1:5000 incubated at room temperature for 1.5 hours.



Biolayer interferometry (BLI) kinetic assays of 84757-4-RR against Human RB1CC1 were performed. The affinity constant is 0.396 nM.