

For Research Use Only

# RB1CC1 Recombinant antibody, PBS Only

Catalog Number: 84757-3-PBS



## Basic Information

<b>Catalog Number:</b> 84757-3-PBS	<b>GenBank Accession Number:</b> BC017556	<b>Purification Method:</b> Protein A purification
<b>Size:</b> 100ug, Concentration: 1 mg/ml by Nanodrop;	<b>GeneID (NCBI):</b> 9821	<b>CloneNo.:</b> 242204D6
<b>Source:</b> Rabbit	<b>UNIPROT ID:</b> Q8TDY2	
<b>Isotype:</b> IgG	<b>Full Name:</b> RB1-inducible coiled-coil 1	
<b>Immunogen Catalog Number:</b> AG10508	<b>Calculated MW:</b> 1594 aa, 183 kDa	
	<b>Observed MW:</b> 220 kDa	

## Applications

**Tested Applications:**  
WB, IF/ICC, Indirect ELISA

**Species Specificity:**  
human, mouse, rat

## Background Information

RB1CC1, also named as RBICC, is implicated in the regulation of RB1 expression and functions as a DNA-binding transcription factor. It is a potent regulator of the RB1 pathway and a mediator that plays a crucial role in muscular differentiation. Its expression is, thus, a prerequisite for myogenic differentiation. Involved in autophagy. RB1CC1 is required for autophagosome formation. It is probably involved in the tumorigenesis of breast cancer. RB1CC1 is frequently mutated in breast cancer and shows characteristics of a classical tumor suppressor gene.

## Storage

**Storage:**  
Store at -80°C.

**Storage Buffer:**  
PBS Only

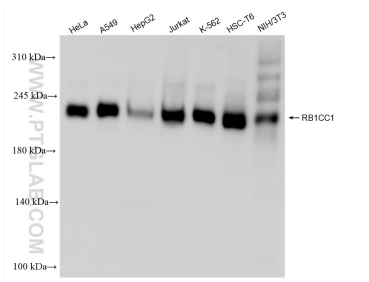
For technical support and original validation data for this product please contact:

T: 1 (888) 4PTGLAB (1-888-478-4522) (toll free in USA), or 1(312) 455-8498 (outside USA)

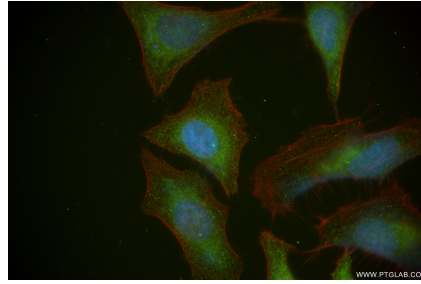
E: [proteintech@ptglab.com](mailto:proteintech@ptglab.com)  
W: [ptglab.com](http://ptglab.com)

**This product is exclusively available under Proteintech Group brand and is not available to purchase from any other manufacturer.**

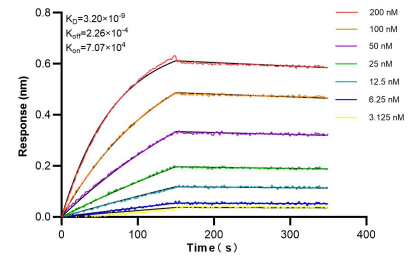
## Selected Validation Data



Various lysates were subjected to SDS PAGE followed by western blot with 84757-3-RR (RB1CC1 antibody) at dilution of 1:5000 incubated at room temperature for 1.5 hours. This data was developed using the same antibody clone with 84757-3-PBS in a different storage buffer formulation.



Immunofluorescent analysis of (4% PFA) fixed HeLa cells using RB1CC1 antibody (84757-3-RR, Clone: 242204D6) at dilution of 1:400 and CoraLite® 488-Conjugated Goat Anti-Rabbit IgG(H+L) (SA00013-2), CL594-Phalloidin (red). This data was developed using the same antibody clone with 84757-3-PBS in a different storage buffer formulation.



Biacore BLI kinetic assays of 84757-3-RR against Human RB1CC1 were performed. The affinity constant is 3.20 nM.