

For Research Use Only

# RAB7A Recombinant antibody

Catalog Number: 84741-1-RR



## Basic Information

<b>Catalog Number:</b> 84741-1-RR	<b>GenBank Accession Number:</b> NM_004637	<b>Purification Method:</b> Protein A purification
<b>Size:</b> 100ul , Concentration: 1000 µg/ml by Nanodrop;	<b>GeneID (NCBI):</b> 7879	<b>CloneNo.:</b> 241948B4
<b>Source:</b> Rabbit	<b>UNIPROT ID:</b> P51149	<b>Recommended Dilutions:</b> WB 1:5000-1:50000 IF/ICC 1:200-1:800
<b>Isotype:</b> IgG	<b>Full Name:</b> RAB7A, member RAS oncogene family	
	<b>Calculated MW:</b> 23 kDa	
	<b>Observed MW:</b> 23 kDa	

## Applications

**Tested Applications:**  
WB, IF/ICC, FC (Intra), ELISA

**Species Specificity:**  
human, mouse, rat

**Positive Controls:**

**WB :** A431 cells, L-929 cells, NIH/3T3 cells, C6 cells, mouse brain tissue, rat brain tissue

**IF/ICC :** A431 cells, HeLa cells

## Background Information

RAB7A, also named as RAB7, belongs to the small GTPase superfamily and Rab family. It is involved in late endocytic transport. RAB7A contributes to the maturation of phagosomes (acidification). Defects in RAB7A are the cause of Charcot-Marie-Tooth disease type 2B (CMT2B). This antibody is specific to RAB7A.

## Storage

**Storage:**  
Store at -20°C. Stable for one year after shipment.  
**Storage Buffer:**  
PBS with 0.02% sodium azide and 50% glycerol pH 7.3.  
**Aliquoting is unnecessary for -20°C storage**

**\*\*\* 20ul sizes contain 0.1% BSA**

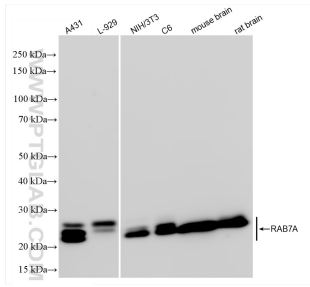
For technical support and original validation data for this product please contact:

T: 1 (888) 4PTGLAB (1-888-478-4522) (toll free in USA), or 1(312) 455-8498 (outside USA)

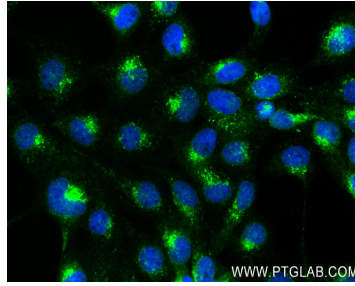
E: [proteintech@ptglab.com](mailto:proteintech@ptglab.com)  
W: [ptglab.com](http://ptglab.com)

**This product is exclusively available under Proteintech Group brand and is not available to purchase from any other manufacturer.**

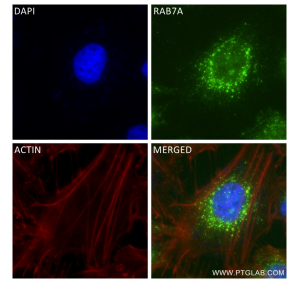
## Selected Validation Data



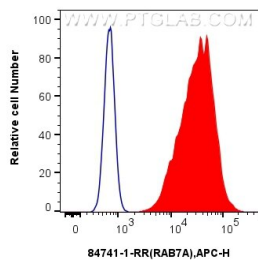
Various lysates were subjected to SDS PAGE followed by western blot with 84741-1-RR (RAB7A antibody) at dilution of 1:10000 incubated at room temperature for 1.5 hours.



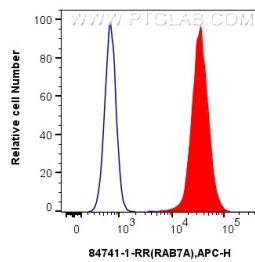
Immunofluorescent analysis of (4% PFA) fixed A431 cells using RAB7A antibody (84741-1-RR, Clone: 241948B4 ) at dilution of 1:400 and CoraLite®488-Conjugated Goat Anti-Rabbit IgG(H+L) (SA00013-2).



Immunofluorescent analysis of (4% PFA) fixed HeLa cells using RAB7A antibody (84741-1-RR, Clone: 241948B4 ) at dilution of 1:400 and CoraLite®488-Conjugated Goat Anti-Rabbit IgG(H+L) (SA00013-2), CL594-Phalloidin (red).



$1 \times 10^6$  A431 cells were intracellularly stained with 0.25  $\mu$ g RAB7A Recombinant antibody (84741-1-RR, Clone:241948B4) and APC-Conjugated Goat Anti-Rabbit IgG(H+L)(red), or 0.25  $\mu$ g Rabbit IgG Isotype Control Recombinant Antibody (98136-1-RR, Clone: 240953C9) (blue). Cells were fixed with 4% PFA and permeabilized with Flow Cytometry Perm Buffer (PF00011-C).



$1 \times 10^6$  K-562 cells were intracellularly stained with 0.25  $\mu$ g RAB7A Recombinant antibody (84741-1-RR, Clone:241948B4) and APC-Conjugated Goat Anti-Rabbit IgG(H+L)(red), or 0.25  $\mu$ g Rabbit IgG Isotype Control Recombinant Antibody (98136-1-RR, Clone: 240953C9) (blue). Cells were fixed with 4% PFA and permeabilized with Flow Cytometry Perm Buffer (PF00011-C).