

For Research Use Only

# C17orf68 Recombinant antibody

Catalog Number: 84737-1-RR



## Basic Information

<b>Catalog Number:</b> 84737-1-RR	<b>GenBank Accession Number:</b> BC111783	<b>Purification Method:</b> Protein A purification
<b>Size:</b> 100ul , Concentration: 1000 µg/ml by Nanodrop;	<b>GeneID (NCBI):</b> 80169	<b>CloneNo.:</b> 241152C6
<b>Source:</b> Rabbit	<b>UNIPROT ID:</b> Q2NKJ3	<b>Recommended Dilutions:</b> WB 1:500-1:2000
<b>Isotype:</b> IgG	<b>Full Name:</b> chromosome 17 open reading frame 68	
<b>Immunogen Catalog Number:</b> AG28167	<b>Calculated MW:</b> 1217 aa, 135 kDa	
	<b>Observed MW:</b> 140/145 kDa	

## Applications

<b>Tested Applications:</b> WB, ELISA	<b>Positive Controls:</b> WB : K-562 cells,
<b>Species Specificity:</b> human	

## Background Information

Conserved telomere maintenance component 1 (CTC1) is a subunit of an alpha accessory factor (AAF) that stimulates the activity of DNA polymerase-alpha-primase, the enzyme that initiates DNA replication (PMID: 19119139). CTC1 also functions in a telomere-associated complex with STN1 and TEN1 (PMID: 19854130).

## Storage

**Storage:**  
Store at -20°C. Stable for one year after shipment.  
**Storage Buffer:**  
PBS with 0.02% sodium azide and 50% glycerol pH 7.3.  
Aliquoting is unnecessary for -20°C storage

\*\*\* 20ul sizes contain 0.1% BSA

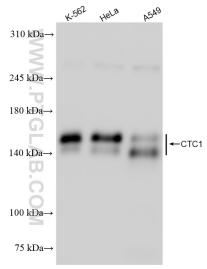
For technical support and original validation data for this product please contact:

T: 1 (888) 4PTGLAB (1-888-478-4522) (toll free in USA), or 1(312) 455-8498 (outside USA)

E: proteintech@ptglab.com  
W: ptglab.com

This product is exclusively available under Proteintech Group brand and is not available to purchase from any other manufacturer.

## Selected Validation Data



Various lysates were subjected to SDS PAGE followed by western blot with 84737-1-RR (C17orf68 antibody) at dilution of 1:1000 incubated at room temperature for 1.5 hours.