

For Research Use Only

C17orf68 Recombinant antibody, PBS Only

Catalog Number: 84737-1-PBS



Basic Information

Catalog Number:

84737-1-PBS

Size:

100ug, Concentration: 1 mg/ml by Nanodrop;

Source:

Rabbit

Isotype:

IgG

Immunogen Catalog Number:

AG28167

GenBank Accession Number:

BC111783

GeneID (NCBI):

80169

UNIPROT ID:

Q2NKJ3

Full Name:

chromosome 17 open reading frame 68

Calculated MW:

1217 aa, 135 kDa

Observed MW:

140/145 kDa

Purification Method:

Protein A purification

CloneNo.:

241152C6

Applications

Tested Applications:

WB, Indirect ELISA

Species Specificity:

human

Background Information

Conserved telomere maintenance component 1 (CTC1) is a subunit of an alpha accessory factor (AAF) that stimulates the activity of DNA polymerase-alpha-primase, the enzyme that initiates DNA replication (PMID: 19119139). CTC1 also functions in a telomere-associated complex with STN1 and TEN1 (PMID: 19854130).

Storage

Storage:

Store at -80°C.

Storage Buffer:

PBS Only

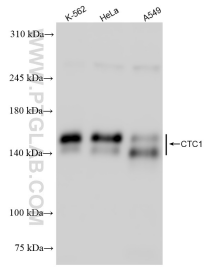
For technical support and original validation data for this product please contact:

T: 1 (888) 4PTGLAB (1-888-478-4522) (toll free in USA), or 1(312) 455-8498 (outside USA)

E: proteintech@ptglab.com
W: ptglab.com

This product is exclusively available under Proteintech Group brand and is not available to purchase from any other manufacturer.

Selected Validation Data



Various lysates were subjected to SDS PAGE followed by western blot with 84737-1-RR (C17orf68 antibody) at dilution of 1:1000 incubated at room temperature for 1.5 hours. This data was developed using the same antibody clone with 84737-1-PBS in a different storage buffer formulation.