

For Research Use Only

Caspase 1 Recombinant antibody, PBS Only

Catalog Number: 84735-1-PBS



Basic Information

Catalog Number: 84735-1-PBS	GenBank Accession Number: BC062327	Purification Method: Protein A purification
Size: 100ug, Concentration: 1 mg/ml by Nanodrop;	GeneID (NCBI): 834	CloneNo.: 241967A12
Source: Rabbit	UNIPROT ID: P29466	
Isotype: IgG	Full Name: caspase 1, apoptosis-related cysteine peptidase (interleukin 1, beta, convertase)	
	Calculated MW: 404 aa, 45 kDa	
	Observed MW: 45 kDa	

Applications

Tested Applications:
WB, FC (Intra), Indirect ELISA

Species Specificity:
human

Background Information

CASP1(caspase-1) is also named as IL1BC, IL1BCE and belongs to the peptidase C14A family. It is a cysteine protease that regulates inflammatory processes through its capacity to process and activate the interleukin-1-beta (IL1B), IL18, and IL33 precursor proteins. The active caspase-1 can increase cellular membrane permeability and intracellular calcium levels, which facilitates lysosome exocytosis and release of host antimicrobial factors and microbial products (PMID:21804020). It has 5 isoforms produced by alternative splicing. 81482-1-RR can recognize the splicing isoforms of caspase 1.

Storage

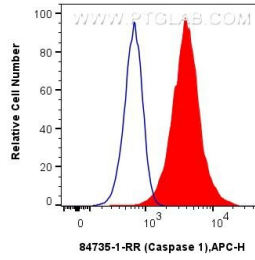
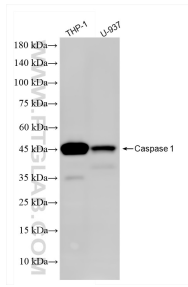
Storage:
Store at -80°C.

Storage Buffer:
PBS Only

For technical support and original validation data for this product please contact:
T: 1 (888) 4PTGLAB (1-888-478-4522) (toll free in USA), or 1(312) 455-8498 (outside USA) E: proteintech@ptglab.com
W: ptglab.com

This product is exclusively available under Proteintech Group brand and is not available to purchase from any other manufacturer.

Selected Validation Data



Various lysates were subjected to SDS PAGE followed by western blot with 84735-1-RR (Caspase 1 antibody) at dilution of 1:10000 incubated at room temperature for 1.5 hours. This data was developed using the same antibody clone with 84735-1-PBS in a different storage buffer formulation.

1×10^6 Jurkat cells were intracellularly stained with 0.25 μ g Caspase 1 Recombinant antibody (84735-1-RR, Clone:241967A12) and APC-Conjugated Goat Anti-Rabbit IgG(H+L) (red), or 0.25 μ g Rabbit IgG Isotype Control Recombinant Antibody (98136-1-RR, Clone: 240953C9) (blue). Cells were fixed with 4% PFA and permeabilized with Flow Cytometry Perm Buffer (PF00011-C). This data was developed using the same antibody clone with 84735-1-PBS in a different storage buffer