

For Research Use Only

MXI1 Recombinant antibody, PBS Only (Detector)

Catalog Number: 84733-5-PBS



Basic Information

Catalog Number: 84733-5-PBS	GenBank Accession Number: BC012907	Purification Method: Protein A purification
Size: 100ug, Concentration: 1 mg/ml by Nanodrop;	GeneID (NCBI): 4601	CloneNo.: 242089D2
Source: Rabbit	UNIPROT ID: P50539	
Isotype: IgG	Full Name: MAX interactor 1	
Immunogen Catalog Number: AG3024	Calculated MW: 228 aa, 26 kDa	
	Observed MW: 36 kDa	

Applications

Tested Applications:
WB, FC (Intra), Sandwich ELISA, Indirect ELISA, Sample test

Species Specificity:
human, mouse

Product Information

84733-5-PBS targets MXI1 as part of a matched antibody pair.

MP01509-3: 84733-1-PBS capture and 84733-5-PBS detection (validated in Sandwich ELISA)

Unconjugated rabbit recombinant monoclonal antibody in PBS only (BSA and azide free) storage buffer at a concentration of 1 mg/mL, ready for conjugation. Created using Proteintech's proprietary in-house recombinant technology. Recombinant production enables unrivalled batch-to-batch consistency, easy scale-up, and future security of supply.

This conjugation ready format makes antibodies ideal for use in many applications including: ELISAs, multiplex assays requiring matched pairs, mass cytometry, and multiplex imaging applications. Antibody use should be optimized by the end user for each application and assay.

Background Information

MXI1 is a transcription factor containing a basic helix-loop-helix leucine zipper (bHLHzip) and belongs to the Myc-Max-Mad transcriptional network. It is a transcriptional repressor thought to negatively regulate MYC function, and is therefore a potential tumor suppressor. This protein inhibits the transcriptional activity of MYC by competing for MAX, another basic helix-loop-helix protein that binds to MYC and is required for its function. Defects in this gene are frequently found in patients with prostate tumors.

Storage

Storage:
Store at -80°C.
Storage Buffer:
PBS Only

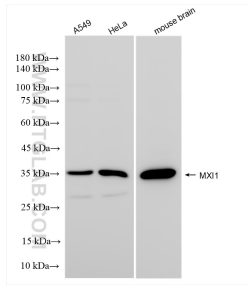
For technical support and original validation data for this product please contact:

T: 1 (888) 4PTGLAB (1-888-478-4522) (toll free in USA), or 1(312) 455-8498 (outside USA)

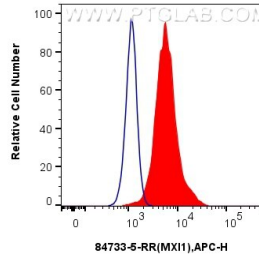
E: proteintech@ptglab.com
W: ptglab.com

This product is exclusively available under Proteintech Group brand and is not available to purchase from any other manufacturer.

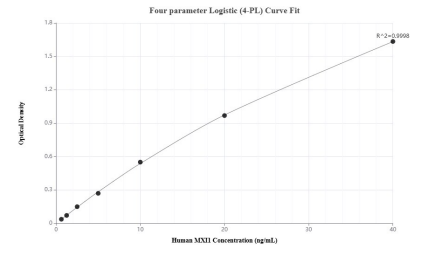
Selected Validation Data



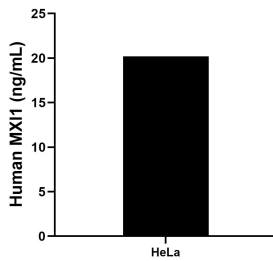
Various lysates were subjected to SDS PAGE followed by western blot with 84733-5-RR (MXI1 antibody) at dilution of 1:3000 incubated at room temperature for 1.5 hours. This data was developed using the same antibody clone with 84733-5-PBS in a different storage buffer formulation.



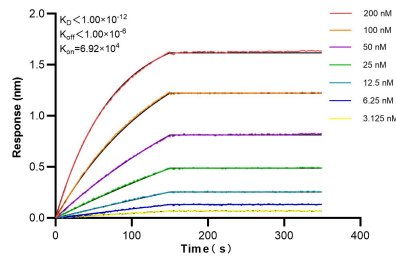
1×10^6 HeLa cells were intracellularly stained with 0.25 ug MXI1 Recombinant antibody (84733-5-RR, Clone:242089D2) and Multi-rAb CoraLite® Plus 647-Goat Anti-Rabbit Recombinant Secondary Antibody (H+L) (RGAR005)(red), or 0.25 ug Rabbit IgG Isotype Control Recombinant Antibody (98136-1-RR, Clone: 240953C9) (blue). Cells were fixed with 4% PFA and permeabilized with Flow Cytometry Perm Buffer (PF00011-C). This data was developed using the same



Sandwich ELISA standard curve of MP01509-3, Human MXI1 Recombinant Matched Antibody Pair - PBS only. 84733-1-PBS was coated to a plate as the capture antibody and incubated with serial dilutions of standard Ag3024. 84733-5-PBS was HRP conjugated as the detection antibody. Range: 0.625-40 ng/mL



The mean MXI1 concentration was determined to be 20.19 ng/mL in HeLa cell extract based on a 1.0 mg/mL extract load.



Biolayer interferometry (BLI) kinetic assays of 84733-5-RR against Human MXI1 were performed. The affinity constant is below 1 pM.