

For Research Use Only

EPB41L4B Recombinant antibody

Catalog Number: 84732-2-RR



Basic Information

Catalog Number: 84732-2-RR	GenBank Accession Number: NM_00138562	Purification Method: Protein A purification
Size: 100ul , Concentration: 1000 ug/ml by Nanodrop;	GeneID (NCBI): 54566	CloneNo.: 242186G4
Source: Rabbit	UNIPROT ID: Q9H329	Recommended Dilutions: WB 1:5000-1:50000
Isotype: IgG	Full Name: erythrocyte membrane protein band 4.1 like 4B	
Immunogen Catalog Number: AG36353	Calculated MW: 99kDa	
	Observed MW: 100 kDa	

Applications

Tested Applications:
WB, ELISA

Species Specificity:
human, mouse

Positive Controls:
WB : MCF-7 cells, HEK-293T cells, HepG2 cells, HaCaT cells, mouse kidney tissue

Background Information

The 4.1 proteins, encoded by the EPB41 (erythrocyte protein band 4.1) genes, are components of the cortical cytoskeleton underlying the cell membrane. The family of 4.1 proteins consists of the eponymous 4.1R protein first identified in erythrocytes (gene: EPB41), 4.1N (EPB41L1), 4.1G (EPB41L2), 4.1B (EPB41L3) as well as the less closely related members NBL4 (EPB41L4A), EHM2 (EPB41L4B) and EPB41L5 (EPB41L5). EHM2 is conspicuous in tumor cells with high migratory potential, such as metastatic melanoma and fibrosarcoma cells. In prostate cancer, EHM2 has been reported to be overexpressed and to diminish adhesion of prostate cancer cells to collagen. (PMID: 20860828)

Storage

Storage:
Store at -20°C. Stable for one year after shipment.

Storage Buffer:
PBS with 0.02% sodium azide and 50% glycerol pH 7.3.

Aliquoting is unnecessary for -20°C storage

*** 20ul sizes contain 0.1% BSA

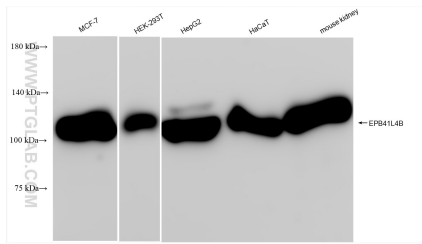
For technical support and original validation data for this product please contact:

T: 1 (888) 4PTGLAB (1-888-478-4522) (toll free in USA), or 1(312) 455-8498 (outside USA)

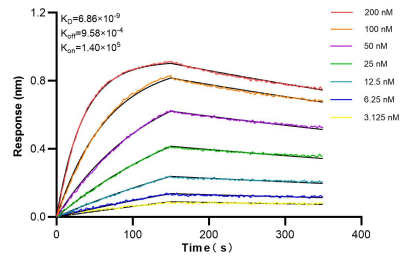
E: proteintech@ptglab.com
W: ptglab.com

This product is exclusively available under Proteintech Group brand and is not available to purchase from any other manufacturer.

Selected Validation Data



Various lysates were subjected to SDS PAGE followed by western blot with 84732-2-RR (EPB41L4B antibody) at dilution of 1:10000 incubated at room temperature for 1.5 hours.



Biolayer interferometry (BLI) kinetic assays of 84732-2-RR against Human EPB41L4B were performed. The affinity constant is 6.86 nM.