

Ferritin light chain 1 Recombinant antibody

Catalog Number: **84731-7-RR**

Basic Information

Catalog Number: 84731-7-RR	GenBank Accession Number: NM_022500.4	Purification Method: Protein A purification
Size: 100ul , Concentration: 1000 µg/ml by Nanodrop;	GeneID (NCBI): 29292	CloneNo.: 242299F7
Source: Rabbit	UNIPROT ID: P02793	Recommended Dilutions: WB: 1:5000-1:50000 IHC: 1:250-1:1000
Isotype: IgG	Full Name: Ferritin light chain 1	
Immunogen Catalog Number: EG2434	Calculated MW: 21 kDa Observed MW: 18-20 kDa	

Applications

Tested Applications:
WB, IHC, ELISA

Species Specificity:
mouse, rat

Note-IHC: suggested antigen retrieval with TE buffer pH 9.0; (*) Alternatively, antigen retrieval may be performed with citrate buffer pH 6.0

Positive Controls:

WB : mouse testis tissue, mouse liver tissue, rat liver tissue, mouse spleen tissue

IHC : mouse liver tissue,

Background Information

FTL belongs to the ferritin family. It stores iron in a soluble, non-toxic, readily available form. FTL is important for iron homeostasis. It plays a role in delivery of iron to cells. FTL mediates iron uptake in capsule cells of the developing kidney. Mutation of FTL will cause hereditary hyperferritinemia-cataract syndrome (HHCS) or neurodegeneration with brain iron accumulation type 3 (NBIA3). Ferritin light polypeptide (FTL) and ferritin heavy polypeptide (FTH1) were the main constituents the striatum and cerebellar cortex revealed.

Storage

Storage:

Store at -20°C. Stable for one year after shipment.

Storage Buffer:

PBS with 0.02% sodium azide and 50% glycerol, pH7.3

Aliquoting is unnecessary for -20°C storage

***** 20ul sizes contain 0.1% BSA**

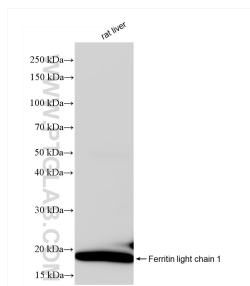
For technical support and original validation data for this product please contact:

T: 1 (888) 4PTGLAB (1-888-478-4522) (toll free in USA), or 1(312) 455-8498 (outside USA)

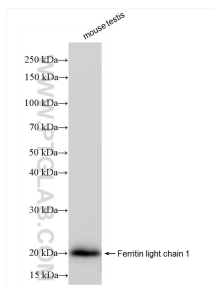
E: proteintech@ptglab.com
W: ptglab.com

This product is exclusively available under Proteintech Group brand and is not available to purchase from any other manufacturer.

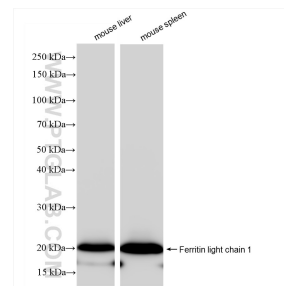
Selected Validation Data



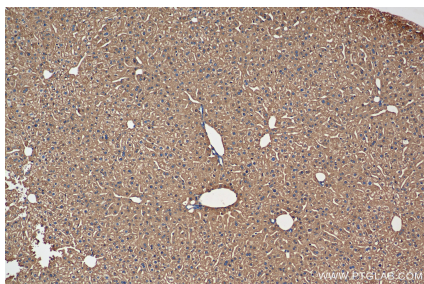
rat liver tissue were subjected to SDS PAGE followed by western blot with 84731-7-RR (Ferritin light chain 1 antibody) at dilution of 1:1000 incubated at room temperature for 1.5 hours.



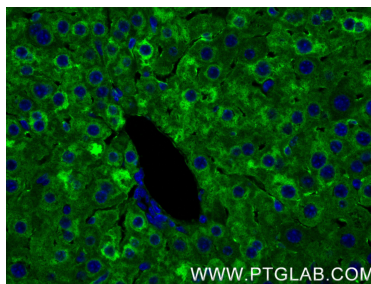
mouse testis tissue were subjected to SDS PAGE followed by western blot with 84731-7-RR (Ferritin light chain 1 antibody) at dilution of 1:10000 incubated at room temperature for 1.5 hours.



Various lysates were subjected to SDS PAGE followed by western blot with 84731-7-RR (Ferritin light chain 1 antibody) at dilution of 1:10000 incubated at room temperature for 1.5 hours.



Immunohistochemical analysis of paraffin-embedded mouse liver tissue slide using 84731-7-RR (Ferritin light chain 1 antibody) at dilution of 1:500 (under 10x lens). Heat mediated antigen retrieval with Tris-EDTA buffer (pH 9.0).



Immunofluorescent analysis of (4% PFA) fixed paraffin-embedded mouse liver tissue using Ferritin light chain 1 antibody (84731-7-RR, Clone: 242299F7) at dilution of 1:500 and CoraLite® 488-Conjugated Goat Anti-Rabbit IgG(H+L) (SA00013-2). Heat mediated antigen retrieval with Tris-EDTA buffer (pH 9.0).