

For Research Use Only

MECR Recombinant antibody

Catalog Number: 84729-4-RR



Basic Information

Catalog Number: 84729-4-RR	GenBank Accession Number: BC003864	Purification Method: Protein A purification
Size: 100ul , Concentration: 1000 ug/ml by Nanodrop;	GeneID (NCBI): 26922	CloneNo.: 242151C5
Source: Rabbit	UNIPROT ID: Q9DCS3	Recommended Dilutions: WB 1:5000-1:50000 IHC 1:200-1:800 IF/ICC 1:500-1:2000
Isotype: IgG	Full Name: mitochondrial trans-2-enoyl-CoA reductase	
Immunogen Catalog Number: AG0465	Calculated MW: 40 kDa	
	Observed MW: 37-40 kDa	

Applications

Tested Applications:
WB, IHC, IF/ICC, ELISA

Species Specificity:
human, mouse, rat

Note-IHC: suggested antigen retrieval with TE buffer pH 9.0; (*) Alternatively, antigen retrieval may be performed with citrate buffer pH 6.0

Positive Controls:

WB: NIH/3T3 cells, HeLa cells, mouse heart tissue, rat heart tissue, mouse stomach tissue

IHC: mouse heart tissue,

IF/ICC: NIH/3T3 cells,

Background Information

Mitochondrial 2-enoyl-acyl-carrier protein reductase (MECR) is an enzyme in the mitochondrial fatty acid synthase (mtFAS) pathway. MECR is involved in the synthesis of lipoic acid and is required for mitochondrial respiratory competence. MECR is highly expressed in skeletal and heart muscles and exhibits lower expression in placenta, liver, kidney, and pancreas. It is weakly expressed or not expressed in the lung (PMID: 32440681, PMID: 37734847, PMID: 38296034).

Storage

Storage:
Store at -20°C. Stable for one year after shipment.
Storage Buffer:
PBS with 0.02% sodium azide and 50% glycerol pH 7.3.
Aliquoting is unnecessary for -20°C storage

***** 20ul sizes contain 0.1% BSA**

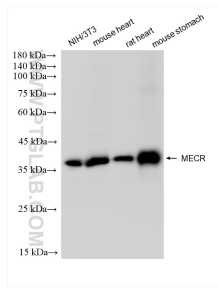
For technical support and original validation data for this product please contact:

T: 1 (888) 4PTGLAB (1-888-478-4522) (toll free in USA), or 1(312) 455-8498 (outside USA)

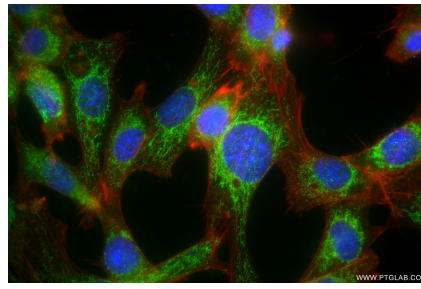
E: proteintech@ptglab.com
W: ptglab.com

This product is exclusively available under Proteintech Group brand and is not available to purchase from any other manufacturer.

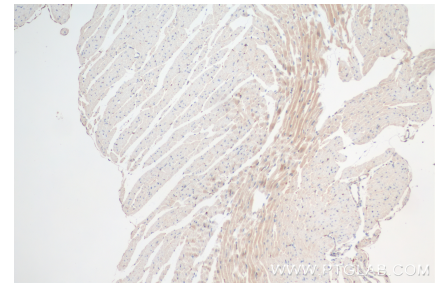
Selected Validation Data



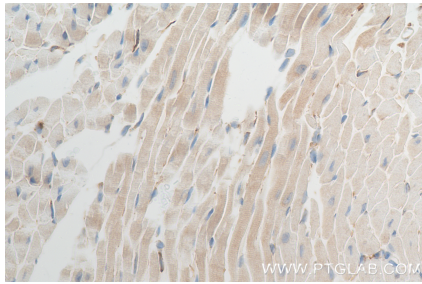
Various lysates were subjected to SDS PAGE followed by western blot with 84729-4-RR (MECR antibody) at dilution of 1:10000 incubated at room temperature for 1.5 hours.



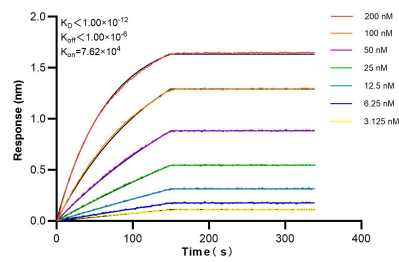
Immunofluorescent analysis of (4% PFA) fixed NIH/3T3 cells using MECR antibody (84729-4-RR, Clone: 242151C5) at dilution of 1:1000 and CoraLite® 488-Conjugated Goat Anti-Rabbit IgG(H+L) (SA00013-2), CL594-Phalloidin (red).



Immunohistochemical analysis of paraffin-embedded mouse heart tissue slide using 84729-4-RR (MECR antibody) at dilution of 1:400 (under 10x lens). Heat mediated antigen retrieval with Tris-EDTA buffer (pH 9.0).



Immunohistochemical analysis of paraffin-embedded mouse heart tissue slide using 84729-4-RR (MECR antibody) at dilution of 1:400 (under 40x lens). Heat mediated antigen retrieval with Tris-EDTA buffer (pH 9.0).



Biolayer interferometry (BLI) kinetic assays of 84729-4-RR against Mouse MECR were performed. The affinity constant is below 1 pM.