

For Research Use Only

# Plasma kallikrein/KLKB1 Recombinant antibody, PBS Only (Capture)

Catalog Number: 84726-2-PBS



## Basic Information

<b>Catalog Number:</b> 84726-2-PBS	<b>GenBank Accession Number:</b> GeneID (NCBI): 3818	<b>Purification Method:</b> Protein A purification
<b>Size:</b> 100ug, Concentration: 1 mg/ml by Nanodrop;	<b>UNIPROT ID:</b> P03952	<b>CloneNo.:</b> 242019F1
<b>Source:</b> Rabbit	<b>Full Name:</b> kallikrein B, plasma (Fletcher factor)	
<b>Isotype:</b> IgG	<b>Calculated MW:</b> 71kDa	

## Applications

**Tested Applications:**  
Cytometric bead array, Sandwich ELISA, Indirect ELISA, Sample test

**Species Specificity:**  
human

## Product Information

84726-2-PBS targets Plasma kallikrein/KLKB1 as part of a matched antibody pair:

MP01518-1: 84726-2-PBS capture and 84726-3-PBS detection (validated in Cytometric bead array)

MP01518-3: 84726-2-PBS capture and 84726-1-PBS detection (validated in Sandwich ELISA)

Unconjugated rabbit recombinant monoclonal antibody in PBS only (BSA and azide free) storage buffer at a concentration of 1 mg/mL, ready for conjugation. Created using Proteintech's proprietary in-house recombinant technology. Recombinant production enables unrivalled batch-to-batch consistency, easy scale-up, and future security of supply.

This conjugation ready format makes antibodies ideal for use in many applications including: ELISAs, multiplex assays requiring matched pairs, mass cytometry, and multiplex imaging applications. Antibody use should be optimized by the end user for each application and assay.

## Storage

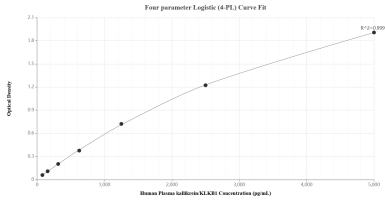
**Storage:**  
Store at -80°C.

**Storage Buffer:**  
PBS Only

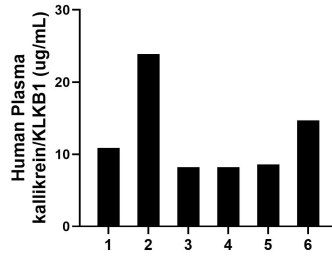
For technical support and original validation data for this product please contact:  
T: 1 (888) 4PTGLAB (1-888-478-4522) (toll free in USA), or 1(312) 455-8498 (outside USA)      E: proteintech@ptglab.com  
W: ptglab.com

**This product is exclusively available under Proteintech Group brand and is not available to purchase from any other manufacturer.**

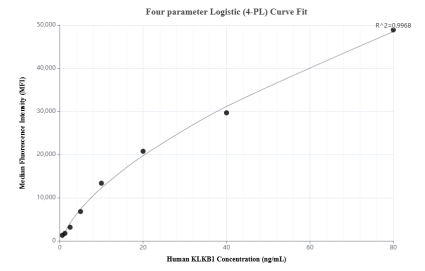
## Selected Validation Data



Sandwich ELISA standard curve of MP01518-3, Human Plasma KLKB1 Recombinant Matched Antibody Pair - PBS only. 84726-2-PBS was coated to a plate as the capture antibody and incubated with serial dilutions of standard Eg1163. 84726-1-PBS was HRP conjugated as the detection antibody. Range: 78.1-5000 pg/mL



Serum of six individual healthy human donors was measured. The Plasma KLKB1 concentration of detected samples was determined to be 12.4 ug/mL with a range of 8.2-23.9 ug/mL



Cytometric bead array standard curve of MP01518-1, KLKB1 Recombinant Matched Antibody Pair, PBS Only. Capture antibody: 84726-2-PBS. Detection antibody: 84726-3-PBS. Standard: Eg1163. Range: 0.625-80 ng/mL