

For Research Use Only

JAM-A/CD321 Recombinant antibody, PBS Only (Capture)

Catalog Number: 84720-2-PBS



Basic Information

Catalog Number: 84720-2-PBS	GenBank Accession Number: NM_016946.6	Purification Method: Protein A purification
Size: 100ug, Concentration: 1 mg/ml by Nanodrop;	GeneID (NCBI): 50848	CloneNo.: 242290C2
Source: Rabbit	UNIPROT ID: Q9Y624-1	
Isotype: IgG	Full Name: F11 receptor	
	Calculated MW: 33kDa	
	Observed MW: 38 kDa	

Applications

Tested Applications:
WB, Cytometric bead array, Indirect ELISA

Species Specificity:
human

Product Information

84720-2-PBS targets JAM-A/CD321 as part of a matched antibody pair:

MP00247-3: 84720-2-PBS capture and 84720-3-PBS detection (validated in Cytometric bead array)

Unconjugated rabbit recombinant monoclonal antibody in PBS only (BSA and azide free) storage buffer at a concentration of 1 mg/mL, ready for conjugation. Created using Proteintech's proprietary in-house recombinant technology. Recombinant production enables unrivalled batch-to-batch consistency, easy scale-up, and future security of supply.

This conjugation ready format makes antibodies ideal for use in many applications including: ELISAs, multiplex assays requiring matched pairs, mass cytometry, and multiplex imaging applications. Antibody use should be optimized by the end user for each application and assay.

Background Information

The F11 receptor (F11R) was first identified in human platelets as a 32/35 kDa protein duplex that serves as the receptor for a functional antibody that activates platelets. It seems to play a role in epithelial tight junction formation. It was also reported to function as a receptor for reovirus and a ligand for the integrin LFA1.

Storage

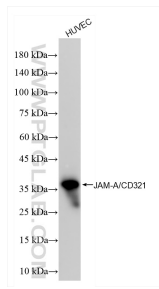
Storage:
Store at -80°C.

Storage Buffer:
PBS Only

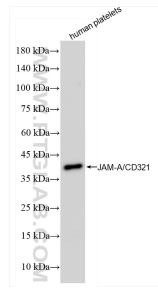
For technical support and original validation data for this product please contact:
T: 1 (888) 4PTGLAB (1-888-478-4522) (toll free in USA), or 1(312) 455-8498 (outside USA)
E: proteintech@ptglab.com
W: ptglab.com

This product is exclusively available under Proteintech Group brand and is not available to purchase from any other manufacturer.

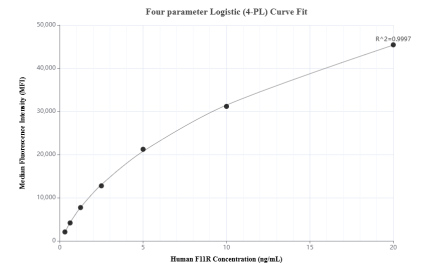
Selected Validation Data



HUVEC cells were subjected to SDS PAGE followed by western blot with 84720-2-RR (JAM-A/Junctional Adhesion Molecule A antibody) at dilution of 1:10000 incubated at room temperature for 1.5 hours. This data was developed using the same antibody clone with 84720-2-PBS in a different storage buffer formulation.



human peripheral blood platelets were subjected to SDS PAGE followed by western blot with 84720-2-RR (JAM-A/Junctional Adhesion Molecule A antibody) at dilution of 1:10000 incubated at room temperature for 1.5 hours. This data was developed using the same antibody clone with 84720-2-PBS in a different storage buffer formulation.



Cytometric bead array standard curve of MP00247-3, F11R Recombinant Matched Antibody Pair, PBS Only. Capture antibody: 84720-2-PBS. Detection antibody: 84720-3-PBS. Standard: Eg1372. Range: 0.313-20 ng/mL.