

For Research Use Only

MPP8 Recombinant antibody

Catalog Number: 84719-4-RR



Basic Information

Catalog Number: 84719-4-RR	GenBank Accession Number: BC003542	Purification Method: Protein A purification
Size: 100ul , Concentration: 1000 µg/ml by Nanodrop;	GeneID (NCBI): 54737	CloneNo.: 242205B5
Source: Rabbit	UNIPROT ID: Q99549	Recommended Dilutions: WB 1:2000-1:10000
Isotype: IgG	Full Name: M-phase phosphoprotein 8	
Immunogen Catalog Number: AG10268	Calculated MW: 860 aa, 97 kDa	
	Observed MW: 97-105 kDa	

Applications

Tested Applications: WB, ELISA	Positive Controls: WB : HEK-293 cells, HeLa cells, HepG2 cells, MCF-7 cells, U2OS cells
Species Specificity: human	

Background Information

The M-phase phosphoprotein 8 (MPP8) was firstly identified to coimmunoprecipitate with the RanBPM-comprised large protein complex [PMID:19956676]. It also binds to methylated H3K9 and recruited the H3K9 methyltransferases GLP and ESET, as well as DNA methyltransferase 3A (DNMT3A) to the promoter of the E-cadherin gene, a key regulator of tumor cell growth and epithelial-to-mesenchymal transition (EMT) [PMID:18726070]. This binding event of MPP8-H3K9me modulates the expression of E-cadherin, a key regulator of cell-cell adhesion with implications in embryonic development, tissue morphogenesis and homeostasis , together with H3K9 methyltransferases GLP and ESET and DNA methyltransferase 3a (Dnmt3a)

Storage

Storage:
Store at -20°C. Stable for one year after shipment.
Storage Buffer:
PBS with 0.02% sodium azide and 50% glycerol pH 7.3.
Aliquoting is unnecessary for -20°C storage

*** 20ul sizes contain 0.1% BSA

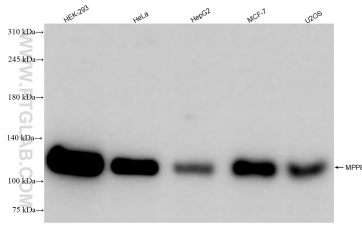
For technical support and original validation data for this product please contact:

T: 1 (888) 4PTGLAB (1-888-478-4522) (toll free in USA), or 1(312) 455-8498 (outside USA)

E: proteintech@ptglab.com
W: ptglab.com

This product is exclusively available under Proteintech Group brand and is not available to purchase from any other manufacturer.

Selected Validation Data



Various lysates were subjected to SDS PAGE followed by western blot with 84719-4-RR (MPP8 antibody) at dilution of 1:5000 incubated at room temperature for 1.5 hours.