

For Research Use Only

# YTHDF3 Recombinant antibody, PBS Only (Capture)

Catalog Number: 84709-3-PBS



## Basic Information

<b>Catalog Number:</b> 84709-3-PBS	<b>GenBank Accession Number:</b> BC052970	<b>Purification Method:</b> Protein A purification
<b>Size:</b> 100ug, Concentration: 1 mg/ml by Nanodrop;	<b>GeneID (NCBI):</b> 253943	<b>CloneNo.:</b> 242149F3
<b>Source:</b> Rabbit	<b>UNIPROT ID:</b> Q7Z739	
<b>Isotype:</b> IgG	<b>Full Name:</b> YTH domain family, member 3	
<b>Immunogen Catalog Number:</b> AG22407	<b>Calculated MW:</b> 585 aa, 64 kDa	
	<b>Observed MW:</b> 64 kDa	

## Applications

**Tested Applications:**  
WB, Cytometric bead array, Indirect ELISA

**Species Specificity:**  
human, mouse, rat

## Product Information

84709-3-PBS targets YTHDF3 as part of a matched antibody pair:

MP01516-1: 84709-3-PBS capture and 84709-1-PBS detection (validated in Cytometric bead array)

MP01516-2: 84709-3-PBS capture and 84709-2-PBS detection (validated in Cytometric bead array)

Unconjugated rabbit recombinant monoclonal antibody in PBS only (BSA and azide free) storage buffer at a concentration of 1 mg/mL, ready for conjugation. Created using Proteintech's proprietary in-house recombinant technology. Recombinant production enables unrivalled batch-to-batch consistency, easy scale-up, and future security of supply.

This conjugation ready format makes antibodies ideal for use in many applications including: ELISAs, multiplex assays requiring matched pairs, mass cytometry, and multiplex imaging applications. Antibody use should be optimized by the end user for each application and assay.

## Background Information

YTHDF3, also named as YTH domain-containing family protein 3, is a 585 amino acid protein, which contains 1 YTH domain. YTHDF3 specifically recognizes and binds N<sup>6</sup>-methyladenosine (m<sup>6</sup>A)-containing RNAs. M<sup>6</sup>A is a modification present at internal sites of mRNAs and some non-coding RNAs and plays a role in the efficiency of mRNA splicing, processing and stability.

## Storage

**Storage:**  
Store at -80°C.

**Storage Buffer:**  
PBS Only

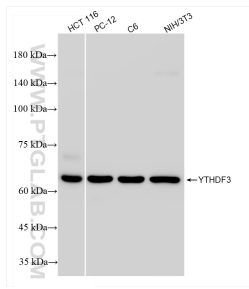
For technical support and original validation data for this product please contact:

T: 1 (888) 4PTGLAB (1-888-478-4522) (toll free in USA), or 1(312) 455-8498 (outside USA)

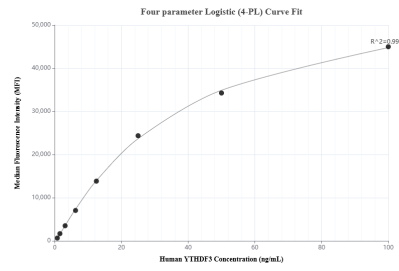
E: [proteintech@ptglab.com](mailto:proteintech@ptglab.com)  
W: [ptglab.com](http://ptglab.com)

**This product is exclusively available under Proteintech Group brand and is not available to purchase from any other manufacturer.**

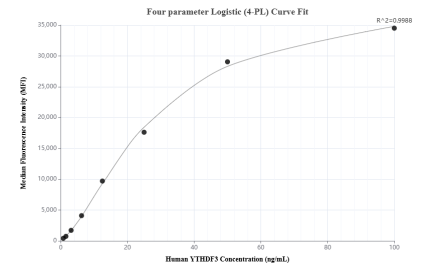
## Selected Validation Data



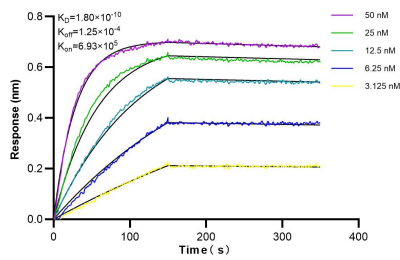
Various lysates were subjected to SDS PAGE followed by western blot with 84709-3-RR (YTHDF3 antibody) at dilution of 1:5000 incubated at room temperature for 1.5 hours. This data was developed using the same antibody clone with 84709-3-PBS in a different storage buffer formulation.



Cytometric bead array standard curve of MP01516-1, YTHDF3 Recombinant Matched Antibody Pair, PBS Only. Capture antibody: 84709-3-PBS. Detection antibody: 84709-1-PBS. Standard: Ag22407. Range: 0.781-100 ng/mL.



Cytometric bead array standard curve of MP01516-2, YTHDF3 Recombinant Matched Antibody Pair, PBS Only. Capture antibody: 84709-3-PBS. Detection antibody: 84709-2-PBS. Standard: Ag22407. Range: 0.781-100 ng/mL.



Biolayer interferometry (BLI) kinetic assays of 84709-3-RR against Human YTHDF3 were performed. The affinity constant is 0.18 nM.