

For Research Use Only

ATP1B1 Recombinant antibody

Catalog Number:84707-5-RR



Basic Information

Catalog Number: 84707-5-RR	GenBank Accession Number: BC000006	Purification Method: Protein A purification
Size: 100ul , Concentration: 1000 ug/ml by Nanodrop;	GeneID (NCBI): 481	CloneNo.: 242109D12
Source: Rabbit	UNIPROT ID: P05026	Recommended Dilutions: WB 1:2000-1:10000
Isotype: IgG	Full Name: ATPase, Na ⁺ /K ⁺ transporting, beta 1 polypeptide	
Immunogen Catalog Number: AG7279	Calculated MW: 35 kDa	
	Observed MW: 45-52 kDa	

Applications

Tested Applications:
WB, ELISA

Species Specificity:
human, mouse, rat

Positive Controls:
WB : mouse brain tissue, mouse heart tissue, rat heart tissue, fetal human brain tissue

Background Information

ATP1B1 is one of beta subunits of the Na⁺/K⁺ ATPase and responsible for formation and structural integrity of the Na⁺/K⁺ ATPase. The Na⁺/K⁺ ATPase is a plasma membrane pump consisting of alpha, beta, and gamma subunits. At least four of Na⁺/K⁺-ATPase beta subunits (β1, β2, β3, β4) have been identified in mammalian cells; the β1-subunit (ATP1B1) is the most ubiquitous. The Na⁺/K⁺ ATPase β subunits have multiple N-glycosylation sites. The predicted MW of ATP1B1 is 35 kDa, while it migrates around 40-52 kDa due to the variable glycosylation. (PMID: 10896885, 17714085)

Storage

Storage:
Store at -20°C. Stable for one year after shipment.

Storage Buffer:
PBS with 0.02% sodium azide and 50% glycerol pH 7.3.

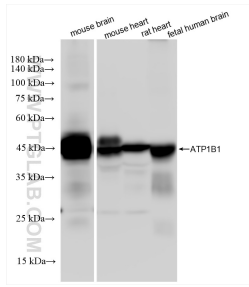
Aliquoting is unnecessary for -20°C storage

*** 20ul sizes contain 0.1% BSA

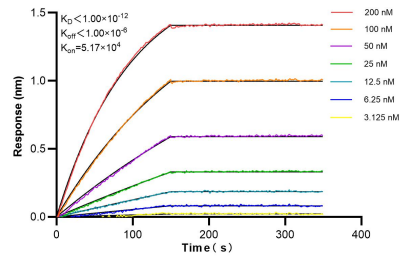
For technical support and original validation data for this product please contact:
T: 1 (888) 4PTGLAB (1-888-478-4522) (toll free in USA), or 1(312) 455-8498 (outside USA)
E: proteintech@ptglab.com
W: ptglab.com

This product is exclusively available under Proteintech Group brand and is not available to purchase from any other manufacturer.

Selected Validation Data



Various lysates were subjected to SDS PAGE followed by western blot with 84707-5-RR (ATP1B1 antibody) at dilution of 1:5000 incubated at room temperature for 1.5 hours.



Biolayer interferometry (BLI) kinetic assays of 84707-5-RR against Human ATP1B1 were performed. The affinity constant is below 1 pM.