

For Research Use Only

ATP1B1 Recombinant antibody, PBS Only

Catalog Number: 84707-5-PBS



Basic Information

Catalog Number: 84707-5-PBS	GenBank Accession Number: BC000006	Purification Method: Protein A purification
Size: 100ug, Concentration: 1 mg/ml by Nanodrop;	GeneID (NCBI): 481	CloneNo.: 242109D12
Source: Rabbit	UNIPROT ID: P05026	
Isotype: IgG	Full Name: ATPase, Na ⁺ /K ⁺ transporting, beta 1 polypeptide	
Immunogen Catalog Number: AG7279	Calculated MW: 35 kDa	
	Observed MW: 45-52 kDa	

Applications

Tested Applications:
WB, Indirect ELISA

Species Specificity:
human, mouse, rat

Background Information

ATP1B1 is one of beta subunits of the Na⁺/K⁺ ATPase and responsible for formation and structural integrity of the Na⁺/K⁺ ATPase. The Na⁺/K⁺ ATPase is a plasma membrane pump consisting of alpha, beta, and gamma subunits. At least four of Na⁺/K⁺-ATPase beta subunits (β 1, β 2, β 3, β 4) have been identified in mammalian cells; the β 1-subunit (ATP1B1) is the most ubiquitous. The Na⁺/K⁺ ATPase β subunits have multiple N-glycosylation sites. The predicted MW of ATP1B1 is 35 kDa, while it migrates around 40-52 kDa due to the variable glycosylation. (PMID: 10896885, 17714085)

Storage

Storage:
Store at -80°C.

Storage Buffer:
PBS Only

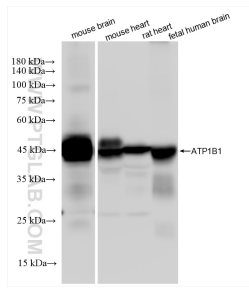
For technical support and original validation data for this product please contact:

T: 1 (888) 4PTGLAB (1-888-478-4522) (toll free in USA), or 1(312) 455-8498 (outside USA)

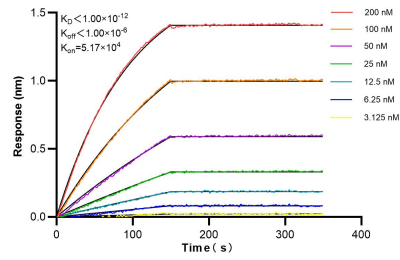
E: proteintech@ptglab.com
W: ptglab.com

This product is exclusively available under Proteintech Group brand and is not available to purchase from any other manufacturer.

Selected Validation Data



Various lysates were subjected to SDS PAGE followed by western blot with 84707-5-RR (ATP1B1 antibody) at dilution of 1:5000 incubated at room temperature for 1.5 hours. This data was developed using the same antibody clone with 84707-5-PBS in a different storage buffer formulation.



Biolayer interferometry (BLI) kinetic assays of 84707-5-RR against Human ATP1B1 were performed. The affinity constant is below 1 pM.