

For Research Use Only

# Siglec-9 Recombinant antibody, PBS Only (Detector)

Catalog Number: 84683-5-PBS



## Basic Information

|  |   |   |
|--|---|---|
| <b>Catalog Number:</b><br>84683-5-PBS                      | <b>GenBank Accession Number:</b><br>NM_014441.3           | <b>Purification Method:</b><br>Protein A purification |
| <b>Size:</b><br>100ug, Concentration: 1 mg/ml by Nanodrop; | <b>GeneID (NCBI):</b><br>27180                            | <b>CloneNo.:</b><br>241799F2                          |
| <b>Source:</b><br>Rabbit                                   | <b>UNIPROT ID:</b><br>Q9Y336-1                            |   |
| <b>Isotype:</b><br>IgG                                     | <b>Full Name:</b><br>sialic acid binding Ig-like lectin 9 |   |
|  | <b>Calculated MW:</b><br>50 kDa                           |   |

## Applications

**Tested Applications:**  
Sandwich ELISA, Indirect ELISA, Sample test

**Species Specificity:**  
human

## Product Information

84683-5-PBS targets Siglec-9 as part of a matched antibody pair:

MP01502-3: 84683-1-PBS capture and 84683-5-PBS detection (validated in Sandwich ELISA)

Unconjugated rabbit recombinant monoclonal antibody in PBS only (BSA and azide free) storage buffer at a concentration of 1 mg/mL, ready for conjugation. Created using Proteintech's proprietary in-house recombinant technology. Recombinant production enables unrivalled batch-to-batch consistency, easy scale-up, and future security of supply.

This conjugation ready format makes antibodies ideal for use in many applications including: ELISAs, multiplex assays requiring matched pairs, mass cytometry, and multiplex imaging applications. Antibody use should be optimized by the end user for each application and assay.

## Storage

**Storage:**  
Store at -80°C.  
**Storage Buffer:**  
PBS Only

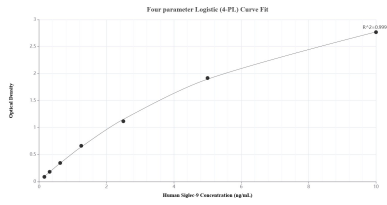
For technical support and original validation data for this product please contact:

T: 1 (888) 4PTGLAB (1-888-478-4522) (toll free in USA), or 1(312) 455-8498 (outside USA)

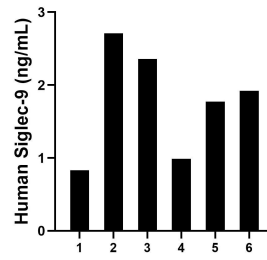
E: [proteintech@ptglab.com](mailto:proteintech@ptglab.com)  
W: [ptglab.com](http://ptglab.com)

**This product is exclusively available under Proteintech Group brand and is not available to purchase from any other manufacturer.**

## Selected Validation Data



Sandwich ELISA standard curve of MP01502-3, Human Siglec-9 Recombinant Matched Antibody Pair - PBS only. 84683-1-PBS was coated to a plate as the capture antibody and incubated with serial dilutions of standard Eg1084. 84683-5-PBS was HRP conjugated as the detection antibody. Range: 0.156-10 ng/mL



Serum of six individual healthy human donors was measured. The Siglec-9 concentration of detected samples was determined to be 1.76 ng/mL with a range of 0.83-2.71 ng/mL.