

For Research Use Only

# Siglec-9 Recombinant antibody

Catalog Number: 84683-4-RR



## Basic Information

<b>Catalog Number:</b> 84683-4-RR	<b>GenBank Accession Number:</b> NM_014441.3	<b>Purification Method:</b> Protein A purification
<b>Size:</b> 100ul , Concentration: 1000 µg/ml by Nanodrop;	<b>GeneID (NCBI):</b> 27180	<b>CloneNo.:</b> 241799E8
<b>Source:</b> Rabbit	<b>UNIPROT ID:</b> Q9Y336-1	<b>Recommended Dilutions:</b> WB 1:1000-1:4000
<b>Isotype:</b> IgG	<b>Full Name:</b> sialic acid binding Ig-like lectin 9	
	<b>Calculated MW:</b> 50 kDa	
	<b>Observed MW:</b> 50 kDa	

## Applications

<b>Tested Applications:</b> WB, ELISA	<b>Positive Controls:</b> WB : mouse skeletal muscle tissue, rat skeletal muscle tissue
<b>Species Specificity:</b> human, mouse, rat	

## Background Information

Sialic acid binding Ig-like lectin 9 (Siglec-9), also known as CD329, is a member of the Siglec family of glycan-recognition proteins. Siglec-9 is a type-I transmembrane protein consisting of an N-terminal extracellular region that contains an N-terminal V-set domain and two C2-set domains, a transmembrane region, and an intracellular domain with an immunoreceptor tyrosine-based inhibitory motif (ITIM) and an ITIM-like motif (PMID: 10801862). It is expressed quite broadly among human blood leukocytes, including monocytes, neutrophils, B cells, NK cells, and minor subsets of T cells (PMID: 32322597). Siglec-9 functions as an inhibitory immune checkpoint and can be targeted to enhance therapeutic antitumor immunity (PMID: 34155121; 37460871).

## Storage

**Storage:**  
Store at -20°C. Stable for one year after shipment.  
**Storage Buffer:**  
PBS with 0.02% sodium azide and 50% glycerol pH 7.3.  
Aliquoting is unnecessary for -20°C storage

\*\*\* 20ul sizes contain 0.1% BSA

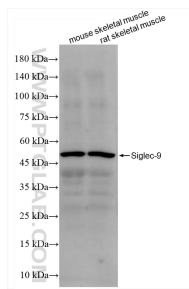
For technical support and original validation data for this product please contact:

T: 1 (888) 4PTGLAB (1-888-478-4522) (toll free in USA), or 1(312) 455-8498 (outside USA)

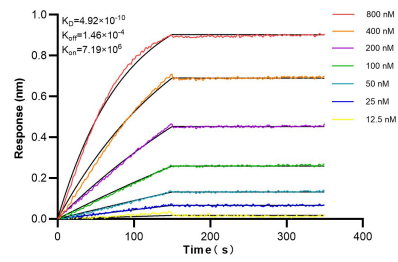
E: [proteintech@ptglab.com](mailto:proteintech@ptglab.com)  
W: [ptglab.com](http://ptglab.com)

This product is exclusively available under Proteintech Group brand and is not available to purchase from any other manufacturer.

## Selected Validation Data



Various lysates were subjected to SDS PAGE followed by western blot with 84683-4-RR (Siglec-9 antibody) at dilution of 1:2000 incubated at room temperature for 1.5 hours.



Biolayer interferometry (BLI) kinetic assays of 84683-4-RR against Human Siglec-9 were performed. The affinity constant is 0.492 nM.