

For Research Use Only

CDC40 Recombinant antibody

Catalog Number: 84679-4-RR



Basic Information

Catalog Number: 84679-4-RR	GenBank Accession Number: BC126114	Purification Method: Protein A purification
Size: 100ul , Concentration: 1000 ug/ml by Nanodrop;	GeneID (NCBI): 51362	CloneNo.: 242034D1
Source: Rabbit	UNIPROT ID: O60508	Recommended Dilutions: WB 1:5000-1:50000
Isotype: IgG	Full Name: cell division cycle 40 homolog (S. cerevisiae)	
Immunogen Catalog Number: AG36151	Observed MW: 65-67 kDa	

Applications

Tested Applications: WB, ELISA	Positive Controls: WB : HEK-293T cells, HUVEC cells, HeLa cells, Jurkat cells, THP-1 cells, K-562 cells
Species Specificity: human	

Background Information

CDC40 (cell division cycle 40), also known as EHB3. It is expected to be located in the nucleus, which is ubiquitinated in bone marrow and lymph node. The protein is required for pre-mRNA splicing as component of the activated spliceosome, and it plays an important role in embryonic brain development; this function does not require proline isomerization (PMID: 33220177; 33220177). The molecular weight of CDC40 is 65 kDa.

Storage

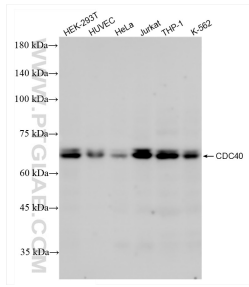
Storage:
Store at -20°C. Stable for one year after shipment.
Storage Buffer:
PBS with 0.02% sodium azide and 50% glycerol pH 7.3.
Aliquoting is unnecessary for -20°C storage

*** 20ul sizes contain 0.1% BSA

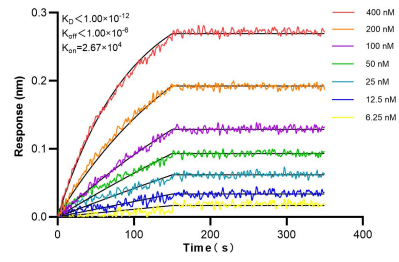
For technical support and original validation data for this product please contact:
T: 1 (888) 4PTGLAB (1-888-478-4522) (toll free in USA), or 1(312) 455-8498 (outside USA) E: proteintech@ptglab.com
W: ptglab.com

This product is exclusively available under Proteintech Group brand and is not available to purchase from any other manufacturer.

Selected Validation Data



Various lysates were subjected to SDS PAGE followed by western blot with 84679-4-RR (CDC40 antibody) at dilution of 1:10000 incubated at room temperature for 1.5 hours.



Biolayer interferometry (BLI) kinetic assays of 84679-4-RR against Human CDC40 were performed. The affinity constant is below 1 pM.