

For Research Use Only

LAIR1 Recombinant antibody, PBS Only (Capture/Detector)

Catalog Number: 84677-3-PBS



Basic Information

Catalog Number: 84677-3-PBS	GenBank Accession Number: BC027899	Purification Method: Protein A purification
Size: 100ug, Concentration: 1 mg/ml by Nanodrop;	GeneID (NCBI): 3903	CloneNo.: 241805F10
Source: Rabbit	UNIPROT ID: Q6GTX8	
Isotype: IgG	Full Name: leukocyte-associated immunoglobulin-like receptor 1	
	Calculated MW: 287 aa, 31 kDa	

Applications

Tested Applications:
Cytometric bead array, Sandwich ELISA, Indirect ELISA,
Sample test

Species Specificity:
human

Product Information

84677-3-PBS targets LAIR1 as part of a matched antibody pair:

MP01466-1: 84677-1-PBS capture and 84677-3-PBS detection (validated in Cytometric bead array, Sandwich ELISA)

MP01466-2: 84677-3-PBS capture and 84677-2-PBS detection (validated in Cytometric bead array)

Unconjugated rabbit recombinant monoclonal antibody in PBS only (BSA and azide free) storage buffer at a concentration of 1 mg/mL, ready for conjugation. Created using Proteintech's proprietary in-house recombinant technology. Recombinant production enables unrivalled batch-to-batch consistency, easy scale-up, and future security of supply.

This conjugation ready format makes antibodies ideal for use in many applications including: ELISAs, multiplex assays requiring matched pairs, mass cytometry, and multiplex imaging applications. Antibody use should be optimized by the end user for each application and assay.

Storage

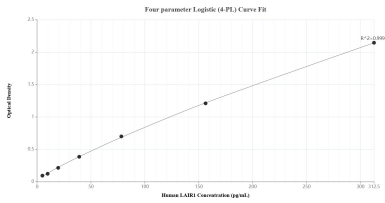
Storage:
Store at -80°C.

Storage Buffer:
PBS Only

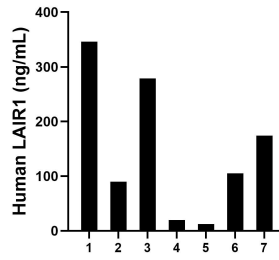
For technical support and original validation data for this product please contact:
T: 1 (888) 4PTGLAB (1-888-478-4522) (toll free in USA), or 1(312) 455-8498 (outside USA) E: proteintech@ptglab.com W: ptglab.com

This product is exclusively available under Proteintech Group brand and is not available to purchase from any other manufacturer.

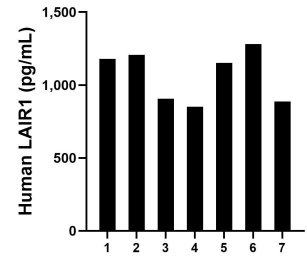
Selected Validation Data



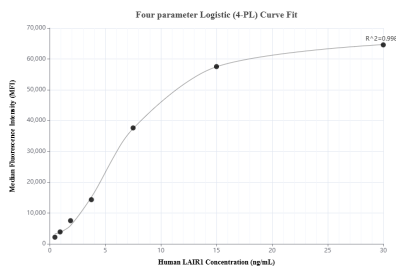
Sandwich ELISA standard curve of MP01466-1, Human LAIR1 Recombinant Matched Antibody Pair - PBS only. 84677-1-PBS was coated to a plate as the capture antibody and incubated with serial dilutions of standard Eg2329. 84677-3-PBS was HRP conjugated as the detection antibody. Range: 4.88-312.5 pg/mL



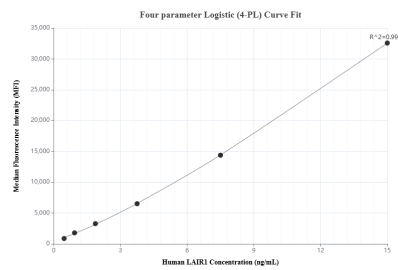
Urine of seven individual healthy human donors was measured. The LAIR1 concentration of detected samples was determined to be 146.7 ng/mL with a range of 12.5-346.3 ng/mL



Serum of seven individual healthy human donors was measured. The LAIR1 concentration of detected samples was determined to be 1,065.9 pg/mL with a range of 851.5-1,280.7 pg/mL



Cytometric bead array standard curve of MP01466-1, LAIR1 Recombinant Matched Antibody Pair, PBS Only. Capture antibody: 84677-1-PBS. Detection antibody: 84677-3-PBS. Standard: Eg2329. Range: 0.469-30 ng/mL



Cytometric bead array standard curve of MP01466-2, LAIR1 Recombinant Matched Antibody Pair, PBS Only. Capture antibody: 84677-3-PBS. Detection antibody: 84677-2-PBS. Standard: Eg2329. Range: 0.469-15 ng/mL