

For Research Use Only

CEBP Alpha/CEBPA Recombinant antibody, PBS Only

Catalog Number: 84668-4-PBS



Basic Information

Catalog Number: 84668-4-PBS	GenBank Accession Number: NM_004364	Purification Method: Protein A purification
Size: 100ug , Concentration: 1 mg/ml by Nanodrop;	GeneID (NCBI): 1050	CloneNo.: 242101C9
Source: Rabbit	UNIPROT ID: P49715	
Isotype: IgG	Full Name: CCAAT/enhancer binding protein (C/EBP), alpha	
Immunogen Catalog Number: AG29947	Calculated MW: 38 kDa	
	Observed MW: 40-45 kDa	

Applications

Tested Applications:
IF/ICC, FC (Intra), Indirect ELISA

Species Specificity:
human

Background Information

CEBPA and its isoforms play important roles in lineage determination and gene activation in a variety of cell types by activating transcription from lineage-specific promoters. CEBPA is a DNA-binding protein that recognizes two different motifs: the CCAAT homology common to many promoters and the enhanced core homology common to many enhancers. In hematopoiesis, C/EBPA is a key factor in driving the development of myeloid cells interacting with a variety of factors, including c-Myc, PU.1, and microRNAs. It can also form heterodimers with the related proteins CEBP-beta and CEBP-gamma. The encoded protein has been shown to bind to the promoter and modulate the expression of the gene encoding leptin which plays an important role in body weight homeostasis. CEBPA can interact with CDK2 and CDK4, thereby inhibiting these kinases and causing growth arrest in cultured cells. Several pathways have been implicated as the means by which CEBPA mediates cell cycle arrest and proliferation, including p21, cyclin-dependent kinases and the E2F complex via c-Myc.

Storage

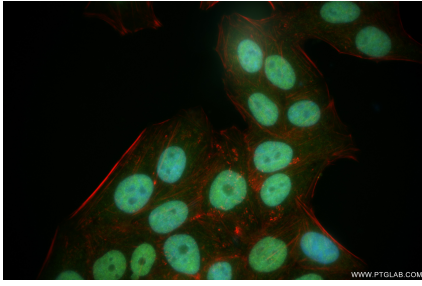
Storage:
Store at -80°C.

Storage Buffer:
PBS Only

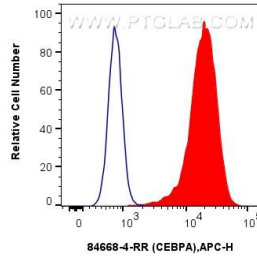
For technical support and original validation data for this product please contact:
T: 1 (888) 4PTGLAB (1-888-478-4522) (toll free in USA), or 1(312) 455-8498 (outside USA) E: proteintech@ptglab.com
W: ptglab.com

This product is exclusively available under Proteintech Group brand and is not available to purchase from any other manufacturer.

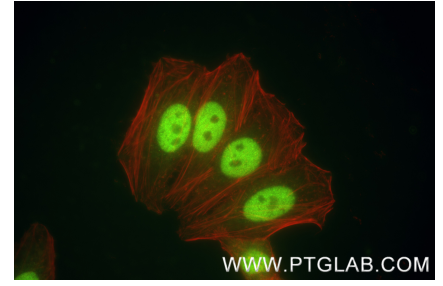
Selected Validation Data



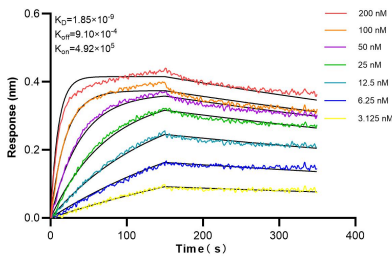
Immunofluorescent analysis of (4% PFA) fixed HepG2 cells using CEBP Alpha/CEBPA antibody (84668-4-RR, Clone: 242101C9) at dilution of 1:2000 and CoraLite@488-Conjugated Goat Anti-Rabbit IgG(H+L) (SA00013-2), CL594-Phalloidin (red). This data was developed using the same antibody clone with 84668-4-PBS in a different storage buffer formulation.



1×10^6 HeLa cells were intracellularly stained with 0.25 ug CEBP Alpha/CEBPA Recombinant antibody (84668-4-RR, Clone:242101C9) and APC-Conjugated Goat Anti-Rabbit IgG(H+L)(red), or 0.25 ug Rabbit IgG Isotype Control Recombinant Antibody (98136-1-RR, Clone: 240953C9) (blue). Cells were fixed and permeabilized with True-Nuclear Transcription Factor Buffer Set. This data was developed using the same antibody clone with 84668-4-PBS in a



Immunofluorescent analysis of (4% PFA) fixed HepG2 cells using CEBP Alpha/CEBPA antibody (84668-4-RR, Clone: 242101C9) at dilution of 1:2000 and CoraLite@488-Conjugated Goat Anti-Rabbit IgG(H+L) (SA00013-2), CL594-Phalloidin (red). This data was developed using the same antibody clone with 84668-4-PBS in a different storage buffer formulation.



Biolayer interferometry (BLI) kinetic assays of 84668-4-RR against Human CEBP Alpha/CEBPA were performed. The affinity constant is 1.85 nM.