

For Research Use Only

# LAMP1 Recombinant antibody, PBS Only (Detector)

Catalog Number: 84658-2-PBS



## Basic Information

<b>Catalog Number:</b> 84658-2-PBS	<b>GenBank Accession Number:</b> NM_005561.4	<b>Purification Method:</b> Protein A purification
<b>Size:</b> 100ug, Concentration: 1 mg/ml by Nanodrop;	<b>GeneID (NCBI):</b> 3916	<b>CloneNo.:</b> 242116A8
<b>Source:</b> Rabbit	<b>ENSEMBL Gene ID:</b> ENSG00000185896	
<b>Isotype:</b> IgG	<b>UNIPROT ID:</b> P11279-1	
	<b>Full Name:</b> lysosomal-associated membrane protein 1	
	<b>Calculated MW:</b> 45 kDa	

## Applications

**Tested Applications:**  
Cytometric bead array, Sandwich ELISA, Indirect ELISA,  
Sample test

**Species Specificity:**  
human

## Product Information

84658-2-PBS targets LAMP1 as part of a matched antibody pair:

MP01489-1: 84658-1-PBS capture and 84658-2-PBS detection (validated in Cytometric bead array, Sandwich ELISA)

Unconjugated rabbit recombinant monoclonal antibody in PBS only (BSA and azide free) storage buffer at a concentration of 1 mg/mL, ready for conjugation. Created using Proteintech's proprietary in-house recombinant technology. Recombinant production enables unrivalled batch-to-batch consistency, easy scale-up, and future security of supply.

This conjugation ready format makes antibodies ideal for use in many applications including: ELISAs, multiplex assays requiring matched pairs, mass cytometry, and multiplex imaging applications. Antibody use should be optimized by the end user for each application and assay.

## Storage

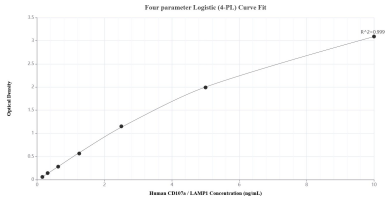
**Storage:**  
Store at -80°C.

**Storage Buffer:**  
PBS Only

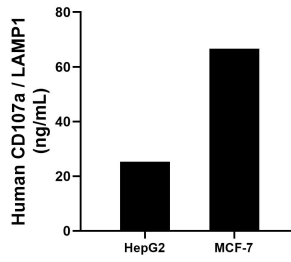
For technical support and original validation data for this product please contact:  
T: 1 (888) 4PTGLAB (1-888-478-4522) (toll free in USA), or 1(312) 455-8498 (outside USA)      E: proteintech@ptglab.com  
W: ptglab.com

This product is exclusively available under Proteintech Group brand and is not available to purchase from any other manufacturer.

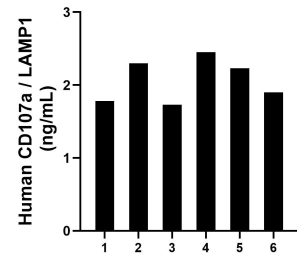
## Selected Validation Data



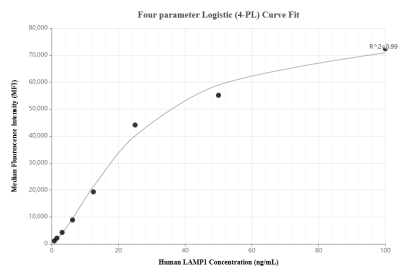
Sandwich ELISA standard curve of MP01489-1, Human CD107a / LAMP1 Recombinant Matched Antibody Pair - PBS only. 84658-1-PBS was coated to a plate as the capture antibody and incubated with serial dilutions of standard Eg2611. 84658-2-PBS was HRP conjugated as the detection antibody. Range: 0.156-10 ng/mL



The mean CD107a / LAMP1 concentration was determined to be 25.30 ng/mL in HepG2 cell extract based on a 1.00 mg/mL extract load and 66.62 ng/mL in MCF-7 cell extract based on a 1.20 mg/mL extract load.



Plasma of six individual healthy human donors was measured. The CD107a / LAMP1 concentration of detected samples was determined to be 2.07 ng/mL with a range of 1.73-2.45 ng/mL



Cytometric bead array standard curve of MP01489-1, CD107a / LAMP1 Recombinant Matched Antibody Pair, PBS Only. Capture antibody: 84658-1-PBS. Detection antibody: 84658-2-PBS. Standard: Eg2611. Range: 0.781-100 ng/mL