

For Research Use Only

# IGF2 Recombinant antibody

Catalog Number: 84643-1-RR



## Basic Information

<b>Catalog Number:</b> 84643-1-RR	<b>GenBank Accession Number:</b> 3481	<b>Purification Method:</b> Protein A purification
<b>Size:</b> 100ul , Concentration: 1000 ug/ml by Nanodrop;	<b>GeneID (NCBI):</b> 3481	<b>CloneNo.:</b> 241746D3
<b>Source:</b> Rabbit	<b>UNIPROT ID:</b> P01344	<b>Recommended Dilutions:</b> WB 1:1000-1:4000
<b>Isotype:</b> IgG	<b>Full Name:</b> insulin-like growth factor 2 (somatomedin A)	
<b>Immunogen Catalog Number:</b> HZ-1161	<b>Observed MW:</b> 20 kDa	

## Applications

<b>Tested Applications:</b> WB, ELISA	<b>Positive Controls:</b> WB : HuH-7 cells,
<b>Species Specificity:</b> human	

## Background Information

Insulin-like growth factor 2 (IGF2) is a crucial protein that plays a significant role in regulating growth, particularly during normal fetal development, and is also often dysregulated during tumorigenesis. IGF2 is one of the main ligands of the type 1 IGF receptor (IGF-1R), a tyrosine kinase receptor that transmits signals upon binding with IGF-II. IGF2 is predominantly secreted via the placenta during pregnancy and, after birth, primarily by hepatocytes, with its secretion being independent of growth hormone (GH) secretion, unlike IGF-I.

## Storage

**Storage:**  
Store at -20°C. Stable for one year after shipment.  
**Storage Buffer:**  
PBS with 0.02% sodium azide and 50% glycerol pH 7.3.  
Aliquoting is unnecessary for -20°C storage

\*\*\* 20ul sizes contain 0.1% BSA

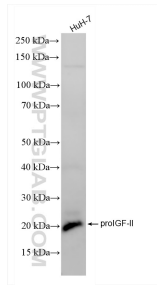
For technical support and original validation data for this product please contact:

T: 1 (888) 4PTGLAB (1-888-478-4522) (toll free in USA), or 1(312) 455-8498 (outside USA)

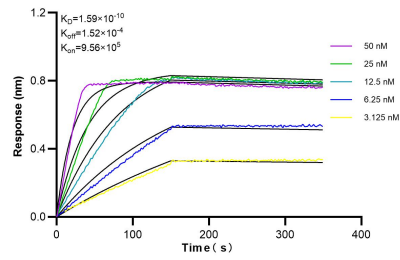
E: [proteintech@ptglab.com](mailto:proteintech@ptglab.com)  
W: [ptglab.com](http://ptglab.com)

This product is exclusively available under Proteintech Group brand and is not available to purchase from any other manufacturer.

## Selected Validation Data



HuH-7 cells were subjected to SDS PAGE followed by western blot with 84643-1-RR (IGF2 antibody) at dilution of 1:2000 incubated at room temperature for 1.5 hours.



Biacore sensorgram showing the binding of 84643-1-RR against Human IGF2 were performed. The affinity constant is 0.159 nM.