

For Research Use Only

IGF2 Recombinant antibody, PBS Only

Catalog Number: 84643-1-PBS



Basic Information

Catalog Number: 84643-1-PBS	GenBank Accession Number: GeneID (NCBI): 3481	Purification Method: Protein A purification
Size: 100ug, Concentration: 1 mg/ml by Nanodrop;	UNIPROT ID: P01344	CloneNo.: 241746D3
Source: Rabbit	Full Name: insulin-like growth factor 2 (somatomedin A)	
Isotype: IgG	Observed MW: 20 kDa	
Immunogen Catalog Number: HZ-1161		

Applications

Tested Applications:
WB, Indirect ELISA

Species Specificity:
human

Background Information

Insulin-like growth factor 2 (IGF2) is a crucial protein that plays a significant role in regulating growth, particularly during normal fetal development, and is also often dysregulated during tumorigenesis. IGF2 is one of the main ligands of the type 1 IGF receptor (IGF-1R), a tyrosine kinase receptor that transmits signals upon binding with IGF-II. IGF2 is predominantly secreted via the placenta during pregnancy and, after birth, primarily by hepatocytes, with its secretion being independent of growth hormone (GH) secretion, unlike IGF-I.

Storage

Storage:
Store at -80°C.

Storage Buffer:
PBS Only

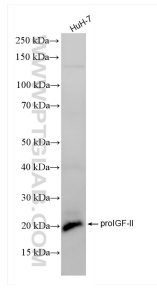
For technical support and original validation data for this product please contact:

T: 1 (888) 4PTGLAB (1-888-478-4522) (toll free
in USA), or 1(312) 455-8498 (outside USA)

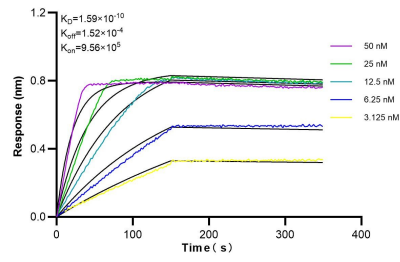
E: proteintech@ptglab.com
W: ptglab.com

This product is exclusively available under Proteintech Group brand and is not available to purchase from any other manufacturer.

Selected Validation Data



HuH-7 cells were subjected to SDS PAGE followed by western blot with 84643-1-RR (IGF 2 antibody) at dilution of 1:2000 incubated at room temperature for 1.5 hours. This data was developed using the same antibody clone with 84643-1-PBS in a different storage buffer formulation.



Biolayer interferometry (BLI) kinetic assays of 84643-1-RR against Human IGF2 were performed. The affinity constant is 0.159 nM.