

For Research Use Only

Syntaxin 6 Recombinant antibody, PBS Only

Catalog Number: 84627-5-PBS



Basic Information

Catalog Number: 84627-5-PBS	GenBank Accession Number: BC009944	Purification Method: Protein A purification
Size: 100ug , Concentration: 1 mg/ml by Nanodrop;	GeneID (NCBI): 10228	CloneNo.: 242100A9
Source: Rabbit	UNIPROT ID: O43752	
Isotype: IgG	Full Name: syntaxin 6	
Immunogen Catalog Number: AG1284	Calculated MW: 29 kDa	
	Observed MW: 32 kDa	

Applications

Tested Applications:
WB, IHC, IF/ICC, IP, Indirect ELISA

Species Specificity:
human, mouse, rat

Background Information

Syntaxin-6 (STX6) is a SNARE protein located in the trans-Golgi network (TGN) and endosomes. It associates with a variety of SNARE proteins and is involved in intracellular vesicle trafficking. STX6 is required for sorting proteins from endosomes toward either the TGN or lysosomes.

Storage

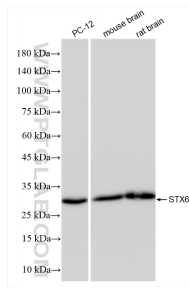
Storage:
Store at -80°C.

Storage Buffer:
PBS Only

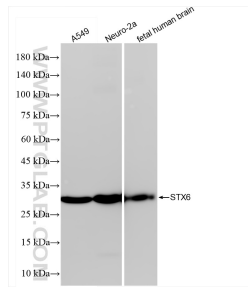
For technical support and original validation data for this product please contact:
T: 1 (888) 4PTGLAB (1-888-478-4522) (toll free in USA), or 1(312) 455-8498 (outside USA) E: proteintech@ptglab.com
W: ptglab.com

This product is exclusively available under Proteintech Group brand and is not available to purchase from any other manufacturer.

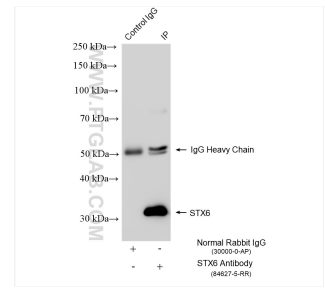
Selected Validation Data



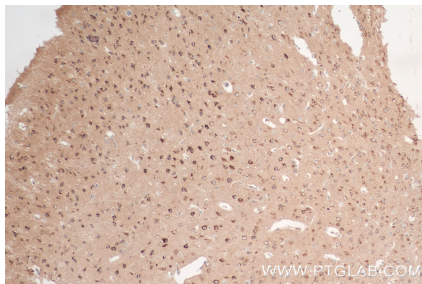
Various lysates were subjected to SDS PAGE followed by western blot with 84627-5-RR (Syntaxin 6 antibody) at dilution of 1:5000 incubated at room temperature for 1.5 hours. This data was developed using the same antibody clone with 84627-5-PBS in a different storage buffer formulation.



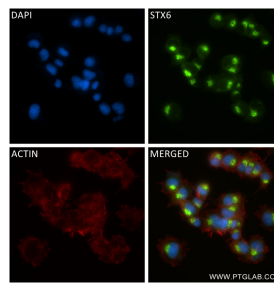
Various lysates were subjected to SDS PAGE followed by western blot with 84627-5-RR (Syntaxin 6 antibody) at dilution of 1:5000 incubated at room temperature for 1.5 hours. This data was developed using the same antibody clone with 84627-5-PBS in a different storage buffer formulation.



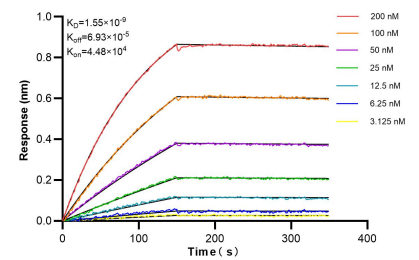
IP result of anti-Syntaxin 6 (IP:84627-5-RR, 4ug; Detection:84627-5-RR 1:1500) with mouse brain tissue lysate 1840 ug. This data was developed using the same antibody clone with 84627-5-PBS in a different storage buffer formulation.



Immunohistochemical analysis of paraffin-embedded mouse brain tissue slide using 84627-5-RR (Syntaxin 6 antibody) at dilution of 1:400 (under 10x lens). Heat mediated antigen retrieval with Tris-EDTA buffer (pH 9.0). This data was developed using the same antibody clone with 84627-5-PBS in a different storage buffer formulation.



Immunofluorescent analysis of (4% PFA) fixed PC-12 cells using Syntaxin 6 antibody (84627-5-RR, Clone: 242100A9) at dilution of 1:500 and CoraLite® 488-Conjugated Goat Anti-Rabbit IgG(H+L) (SA00013-2), CL594-Phalloidin (red). This data was developed using the same antibody clone with 84627-5-PBS in a different storage buffer formulation.



Bi-layer interferometry (BLI) kinetic assays of 84627-5-RR against Human Syntaxin 6 were performed. The affinity constant is 1.55 nM.